

WWW.HUD-SON.COM
1 - 8 0 0 - 7 6 5 - 7 2 9 7

8201 STATE ROUTE 12 • BARNEVELD NY • 13304



CONGRATULATIONS!

You have wisely selected a Hud-Son Product



Hud-Son Forest Equipment, Inc. 8201 State Rt. 12., PO Box 345 Barneveld, NY 13304
Phone: 1.800.765.SAWS • Fax: 315.896.2627 • e-mail info@hud-son.com

ELECTRIC FIREWOOD BUNDLER OWNERS MANUAL

HOW TO USE THE ELECTRIC BUNDLER

1. Place the assembled unit on level ground.
2. Remove foot pedal and guard from back guard and place on the ground in front of the unit.
3. Plug the motor into any 110V outlet. Be sure the cable is free of obstructions and is out of the way of the wood and any walkways.
4. Firewood should be cut and split. The wood should be cut between 18-24" long. How large you keep the wood is at your discretion.
5. Start placing the split wood into the wood hopper. Stack the wood neatly and tight.
6. Once you have all the wood you would like in the hopper, place the shrink wrap under a piece of wood and step back out of the way.
7. Once the wrap is secure slowly press the foot pedal. This will allow the wrap to rotate around the wood and wrap the wood firmly and securely. Only 4-5 rotations are needed to hold the wood.
8. Once wrapped, cut the shrink wrap with a knife and lift the bundled wood from the hopper.
9. Place the wrapped bundler out of the way and repeat the process.

MAINTENANCE

1. Be sure to check the wires and cable from the motor to be sure they are not worn, cracked or cut. If they are, they should be replaced immediately.
2. Bearing needs to be greased after every use.
3. Check bolt and nuts, if they are damaged or are not working correctly they should be replaced immediately.
4. After every use check the belt for wear and cracks, if any damaged is seen, it should be replaced immediately.

ASSEMBLY STEP 1 - FRAME ASSEMBLY

1. Place bottom frame on level ground.

2. Place (4) corner post in bottom frame pockets.

a. Finger tighten the bolts in the pockets.

3. Place top frame onto corner posts.

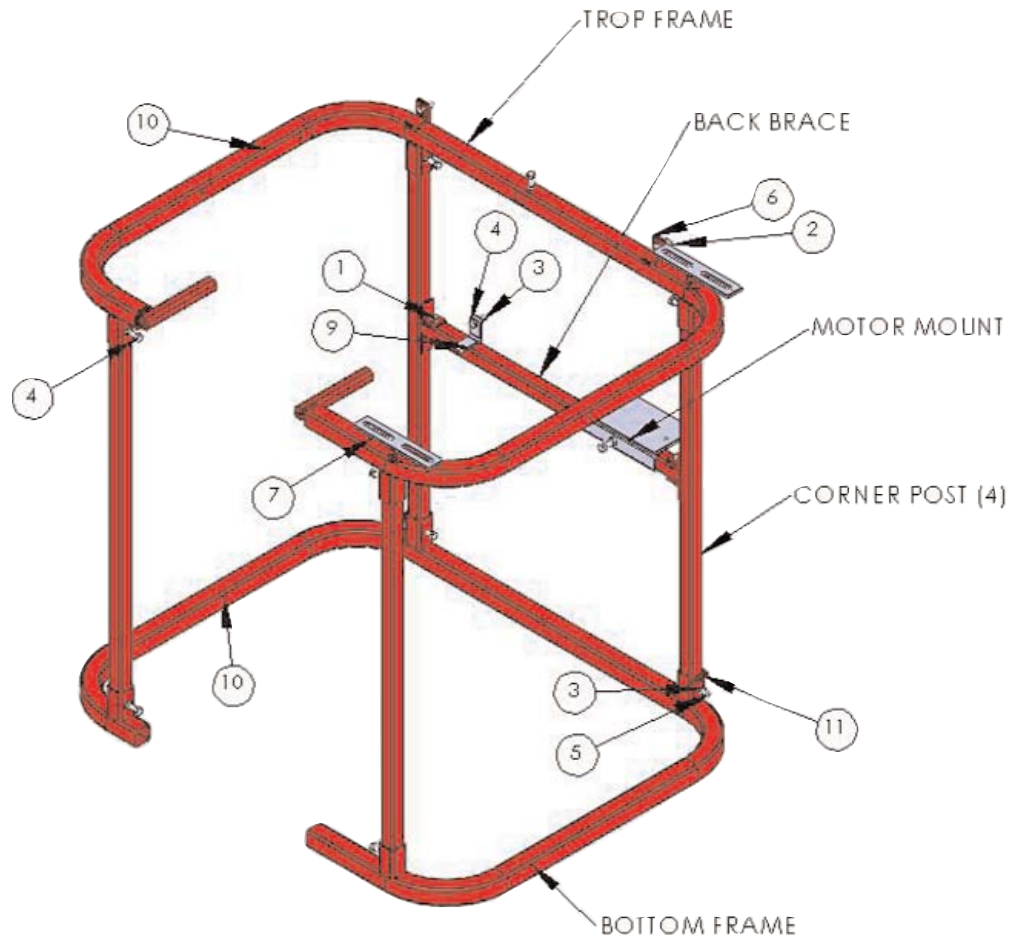
a. Once top frame is level tighten all **4** bolts.

4. To prevent injury a back brace should be worn during this step. Slide motor mount onto tube.

a. Be sure the mount is on the right side & plat is faced outside the frame.

b. Keep this plate free to move (this is also the belt

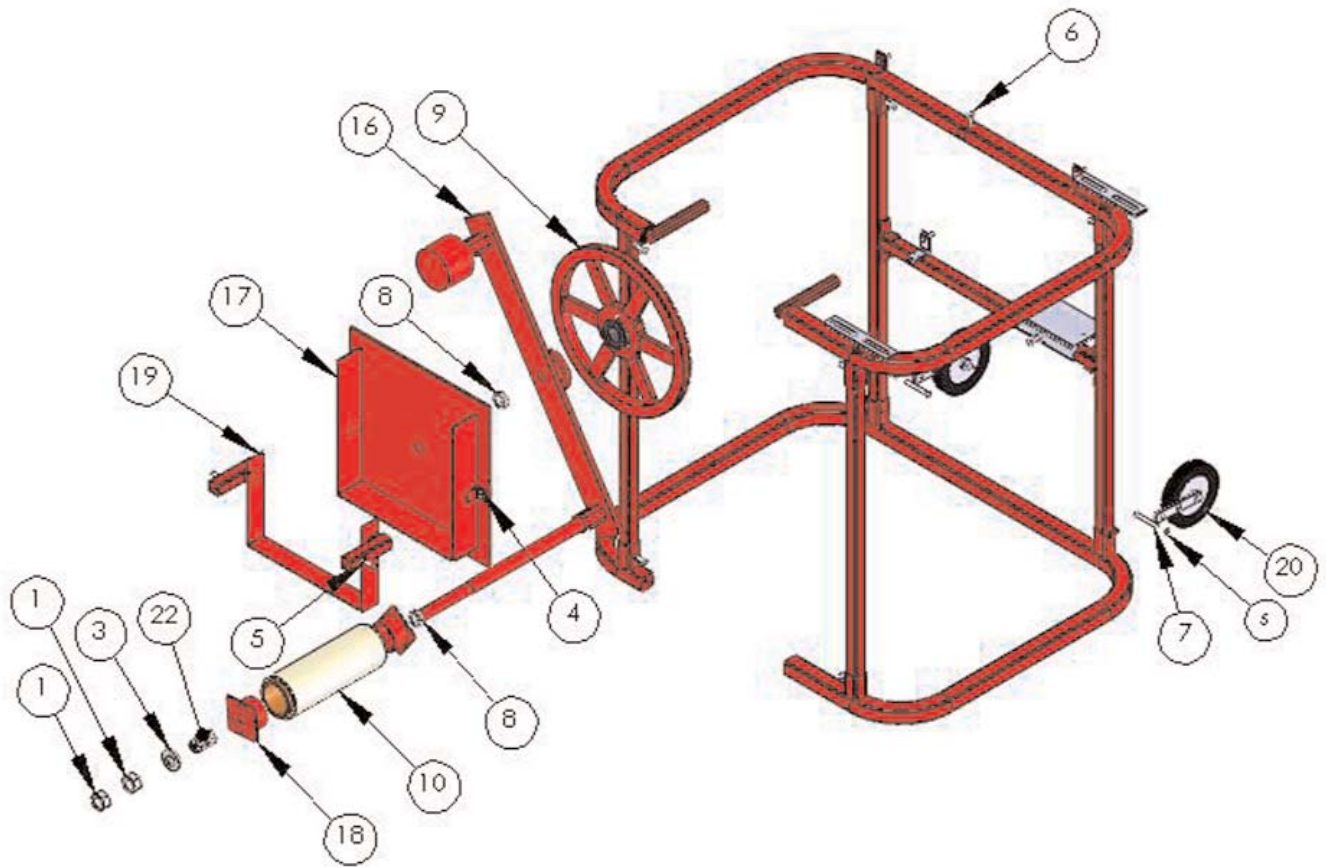
5. Be sure to check to make sure all frame bolts are tight.



Item No.	Part No.	Description
1	13112	HCS 3/8 - 16 X 2.25 Z5
2	37749	WING CF 3/8 - 16 Z
3	1136306	3/8 - 16 FHN Z5
4	110120344	HCS 3/8 - 16 X 1 Z5
5	110120350	HCS 3/8 - 16 X 2 1/2 Z5
6	SS-0012	1 1/2" Angle Bracket w/Hole
7	SS-0033	MOUNT BRACKET
8	WE-001	ELECTRIC MOTOR MOUNT
9	WE-001-03	GUARD BRACKET
10	WM-001	WRAPPER FRAME ASSEMBLY
11	WM-007-01	WHEEL STOP

ASSEMBLY STEP 2 - WRAPPER ASSEMBLY

1. Slide one locking collar 8 onto back plate shaft 17. Do not tighten down.
2. Slide bar assembly 16 onto shaft after the collar.
3. Next slide the sheave assembly 9 onto the same shaft.
4. Once these items are on the shaft, place the shaft into the hole in the top frame of the wrapper. Finger tighten the bolt to hold the assembly in place.
5. This assembly will be adjusted once the motor and the belt are put in place.
6. All these parts are free to rotate, if anything is not rotating, loosen the bolt to allow for rotation.
7. Now that the back plate assembly is in place, the wrap assembly will be added.
8. Slide the other locking collar 8 onto the bar sub-assembly shaft 16. Do not tighten this down just yet.
9. Next slide the first of 2 tube holders 18 onto the shaft.
10. After this comes the shrink wrap roll. 10
11. Lift the tube so that it fits over both of the tube holders on the shaft. These just slide into each end of the shrink wrap tube.
12. Be sure this assembly is pushed onto the shaft until it cannot go any further.
13. Slide the spring 22, then the washer 3 onto the shaft, after these screw the 2 nuts onto the threaded part of the shaft. This is what puts tension onto the wrap.
14. Once this is all in place, you can adjust everything to where you would like it to wrap and tighten the set screw on the collar to lock it into place.
15. You will also need to use the nuts to adjust the tension on the wrap. it will need to be taut, but not tight, if too tight the wrap roll will not rotate and this cause the wrap to tear, if too loose the wrap will just unroll and not wrap the wood tight.
16. Next slide the stacker 19 onto the tubes on the front of the frame. This is down in the desired location.
18. Lastly, add the wheel assemblies 20 to the back, bottom frame. Use the provided hardware, 7 5 to do this.



Item No.	Part No.	Description
1	10542-02285	COUPLER NY - 1" ID
3	33022	USS F/W 1" Z
4	1133082	SAE 3/8 F/W Z
5	1136306	3/8 - 16 FHN Z5
6	110120344	HCS 3/8 - 16 X 1 Z5
7	110120350	HCS 3/8 - 16 X 2 1/2 Z5
8	A-100	1" SHAFT COLLAR
9	DH-1099	SHEAVE W/RED PAINT
10	FW-1030	11" STRETCH WRAP
13	WE-001	ELECTRIC MOTOR MOUNT
14	WE-001-03	GUARD BRACKET
16	WM-002	WRAPPER BAR SUB-ASSEMBLY
17	WM-003A	WRAPPER SQUARE BACK PLATE ASSY
18	WM-004	WRAPPER TUBE HOLDERS
19	WM-006A	SQUARE STACKER
20	WM-007	WRAPPER WHEEL ASSEMBLY
21	WM-007-01	WHEEL STOP
22	WRAPPER SPRING	WRAPPER TENSION SPRING

ASSEMBLY STEP 3 - MOTOR AND GUARDS

1. Place motor 1 onto motor plate and secure with hardware provided 5 8 10 11.

2. Slide 8" sheave 22 onto motor shaft, line up keyways and insert key .

3. Motor mount is still free to slide for adjustment.

4. Slide belt 18 over front wrapper basket and place onto large sheave. Now move the motor so that the belt easily slides onto the smaller sheave. 22.

5. Slide the motor mount until the belt is taunt, but not tight. Once in place tighten bolt to lock into place.

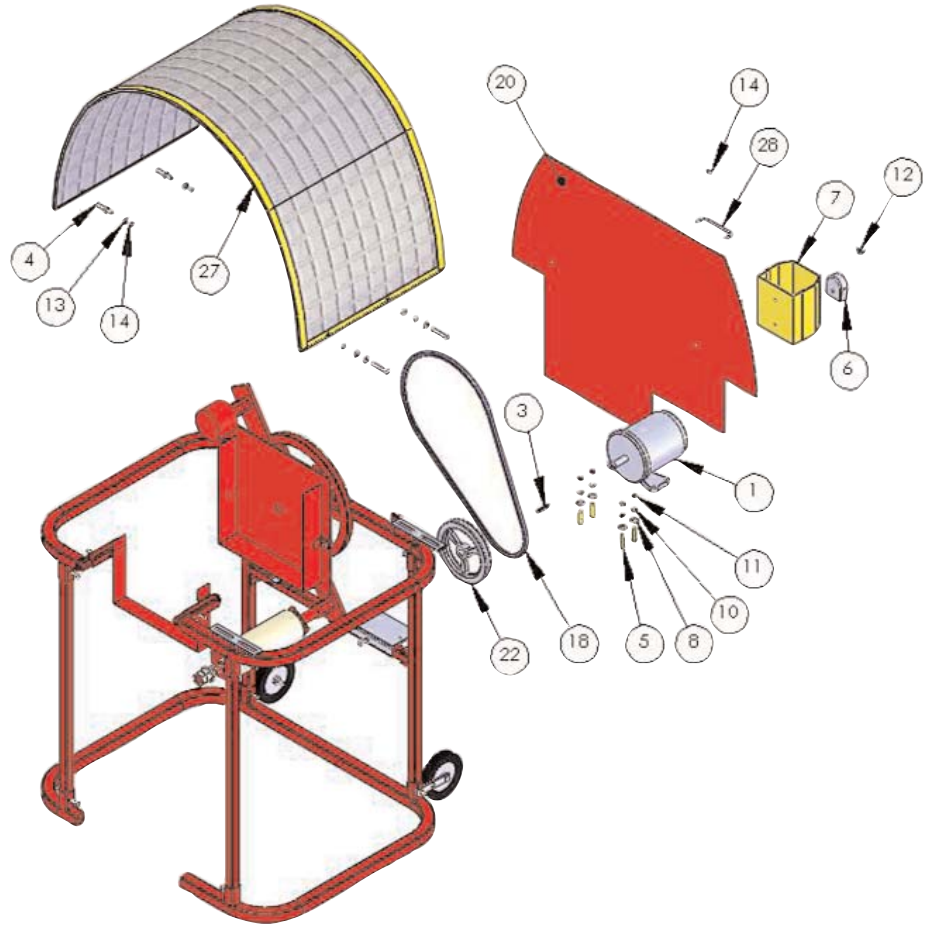
6. Using the top, rear brackets place the large back guard 20 onto bolts and secure in 1 14 and a 12 wing nut. Use the wing nut on the bolt above the motor, this is used so that the foot pedal can also be placed on the bolt for storage and easily removed.

7. Hook the foot pedal assembly (guard) 7 6 wires up to the motor 1.

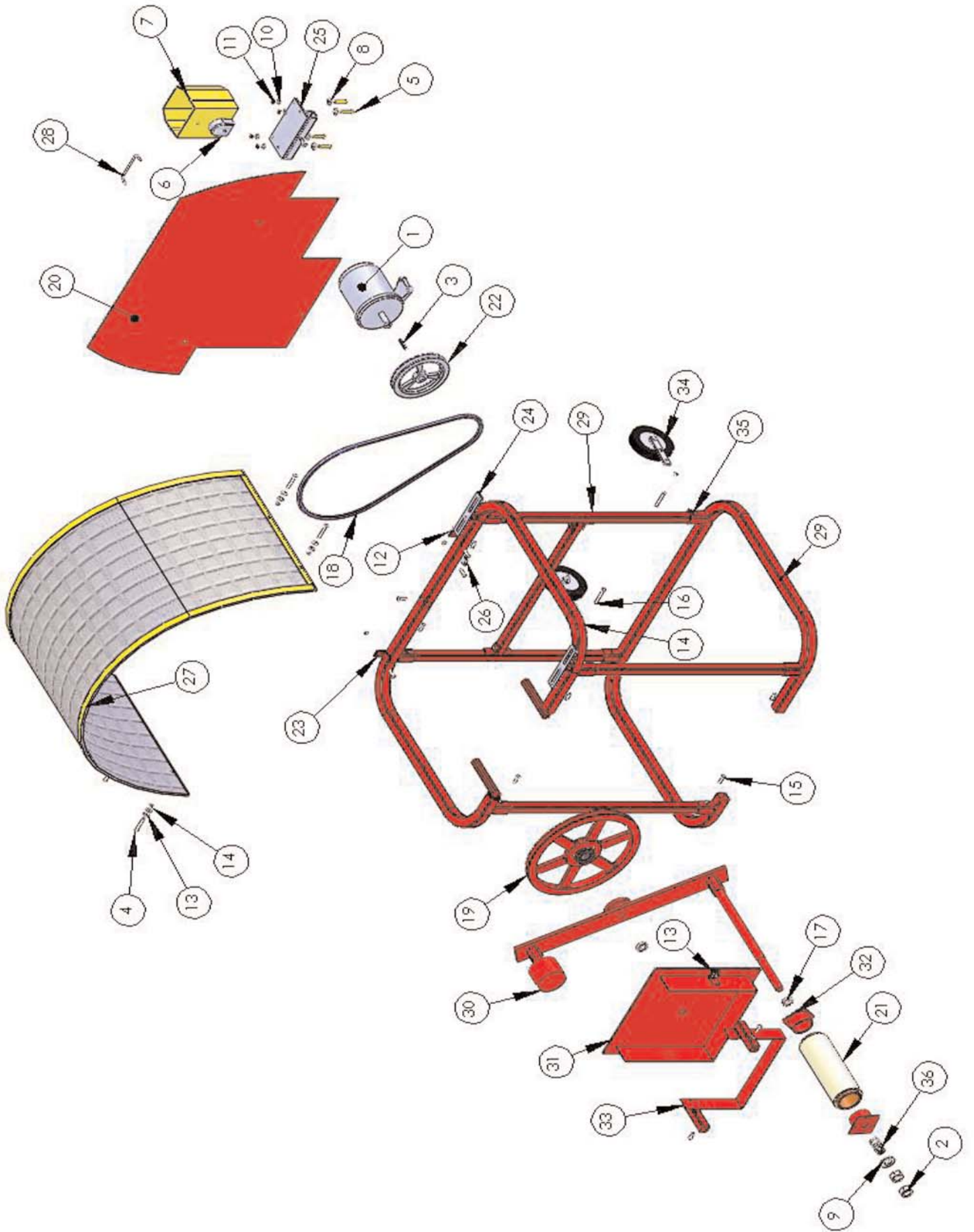
8. It is now time to set the large top guard 27 into place. Line the holes up to the ones on the top frame. Use the provided hardware to secure into place 4 13 14. Be sure to tighten all the hardware.

9. Please double check all the nuts, bolt and hardware to be sure they are tight and secure.

10. Unit is now assembled.



Item No.	Part No.	Description
1	.25 HP MOTOR	1/4 HP ELECTRIC MOTOR
3	10542-02299	KEYWAY 1/4" X 1/4" X 2"
4	13112	HCS 3/8 - 16 X 2.25 Z5
5	18110	HCS 3/8 - 24 X 1.75
6	2A190	FOOT PEDAL
7	2W811	FOOT SWITCH GUARD
8	33008	USS F/W 3/8 Z
10	33622	L/W 3/8" Z
11	36355	FHN 3/8" - 24
12	37749	WING CF 3/8 - 16 Z
13	1133082	SAE 3/8 F/W Z
14	1136306	3/8 - 16 FHN Z5
16	110120350	HCS 3/8 - 16 X 2 1/2 Z5
18	B67	V-BELT
21	FW-1030	11" STRETCH WRAP
22	MA 80 X .75	8" SHEAVE
23	SS-0012	1 1/2" Angle Bracket w/Hole
27	WE-002	WRAPPER GUARD
28	WE-003-01	HANDLE



W W W . H U D - S O N . C O M

Item No.	Part No.	Description	Qty
1	.25 HP MOTOR	1/4 HP ELECTRIC MOTOR	1
2	10542-02285	COUPLER NY - 1" ID	2
3	10542-02299	KEYWAY 1/4" X 1/4" X 2"	1
4	13112	HCS 3/8 - 16 X 2.25 Z5	6
5	18110	HCS 3/8 - 24 X 1.75	4
6	2A190	FOOT PEDAL	1
7	2W811	FOOT SWITCH GUARD	1
8	33008	USS F/W 3/8 Z	4
9	33022	USS F/W 1" Z	1
10	33622	L/W 3/8" Z	4
11	36355	FHN 3/8" - 24	4
12	37749	WING CF 3/8 - 16 Z	1
13	1133082	SAE 3/8 F/W Z	10
14	1136306	3/8 - 16 FHN Z5	21
15	110120344	HCS 3/8 - 16 X 1 Z5	14
16	110120350	HCS 3/8 - 16 X 2 1/2 Z5	2
17	A-100	1" SHAFT COLLAR	2
18	B67	V-BELT	1
19	DH-1099	SHEAVE W/RED PAINT	1
20	DH-2067	WRAPPER-E BACK PLATE	1
21	FW-1030	11" STRETCH WRAP	1
22	MA 80 X .75	8" SHEAVE	1
23	SS-0012	1 1/2" Angle Bracket w/Hole	8
24	SS-0033	MOUNT BRACKET	2
25	WE-001	ELECTRIC MOTOR MOUNT	1
26	WE-001-03	GUARD BRACKET	1
27	WE-002	WRAPPER GUARD	1
28	WE-003-01	HANDLE	1
29	WM-001	WRAPPER FRAME ASSEMBLY	1
30	WM-002	WRAPPER BAR SUB-ASSEMBLY	1
31	WM-003A	WRAPPER SQUARE BACK PLATE ASSY	1
32	WM-004	WRAPPER TUBE HOLDERS	2
33	WM-006A	SQUARE STACKER	1
34	WM-007	WRAPPER WHEEL ASSEMBLY	1
35	WM-007-01	WHEEL STOP	2
36	WRAPPER SPRING	WRAPPER TENSION SPRING	1

W W W . H U D - S O N . C O M