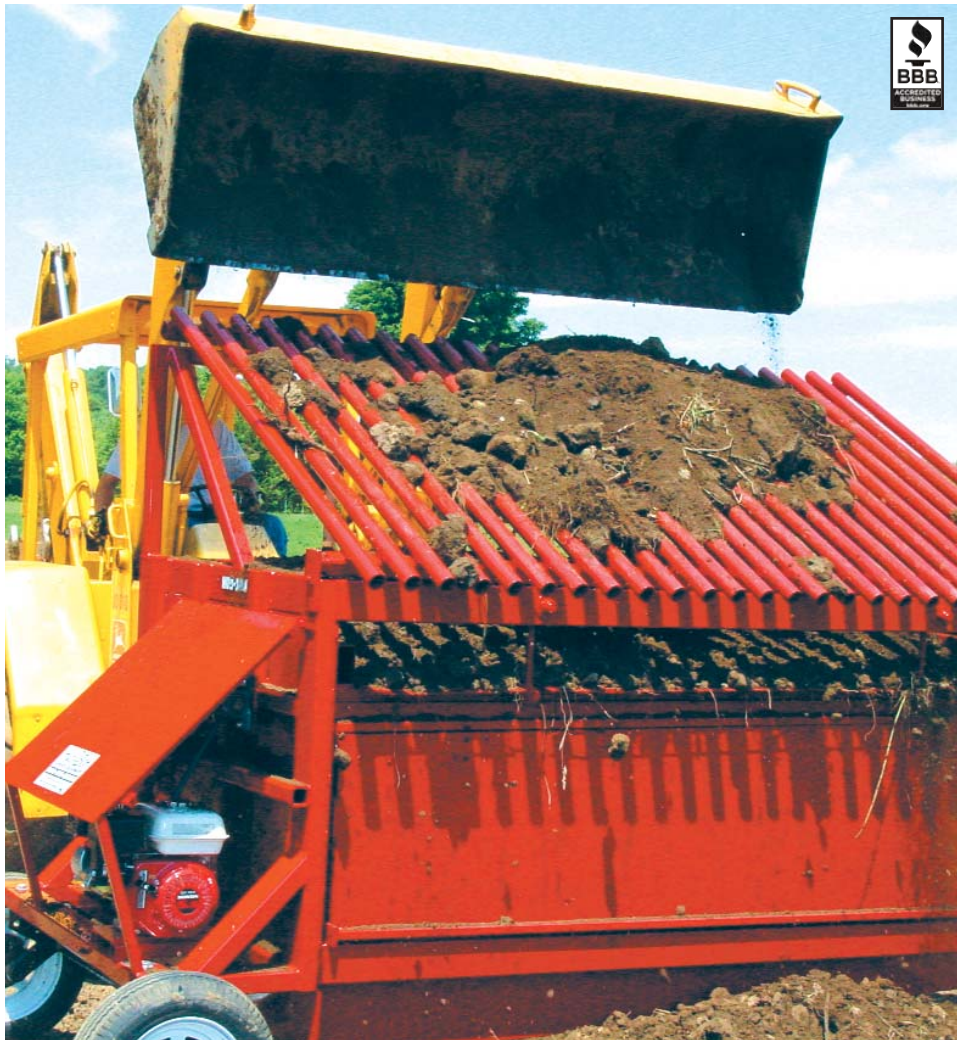


800.765.SAWS • WWW.HUD-SON.COM

# HUD-SON

FOREST EQUIPMENT

FOR THE WORK YOU DO.



HUD-SON TOPSOIL SCREENER OWNER'S MANUAL - MODEL 8M

800.765.SAWS • WWW.HUD-SON.COM

# A N O T E F R O M H U D - S O N

Thank you for your purchase of an 8-M Topsoil Screener from Hud-Son Forest Equipment. We are pleased that you chose us as your supplier of your forestry equipment.

Hud-Son Forest Equipment has been in the forestry business since 1965 and prides itself on developing new and innovative products for the forestry business. Our product line is always transforming so please check us out on the web at [www.hud-son.com](http://www.hud-son.com) for the up and coming developments we are making.

Should you have any questions with the setup of your mill or have any technical questions please feel free to contact our onsite technician Monday - Friday, 8 to 4:30 and Saturdays from 8 to noon eastern time at 1-800-765-7297. We are always available to our customers for any questions or concerns they may have about their equipment.

## C O N T E N T S

- 2 . . . . .A note from Hud-Son
- 3 . . . . .Introduction
- 4 & 5 . . . . .Safety
- 6 . . . . .Quick Reference Sheet
- 7 . . . . .Pre-Operational Sheet
- 12 . . . . .Transport
- 13 . . . . .Drawing
- 14 . . . . .Parts List
- 15 . . . . .Warranty

### DISPUTES

**All disputes, claims and causes of action arising out of the delivery, use, or warranty claims for personal injury and or property damage must:**

- 1. Claimant must provide a written notice of the claim or dispute to the company (at the address below) at least 30 days after the claim arose prior to commencement of any action;
- 2. Company has 60 days to make a decision on the claim and will provide a written response to claimant;
- 3. No action may be commenced until after the company has provided its decision on the claim;
- 4. All claims against the company for any cause related to delivery, design defects, repairs, use of the

equipment or warranty shall be filed in Supreme Court, Oneida County, State of New York. The parties may file for Arbitration in Oneida County New York after consent by both parties.

- 5. Construction and interpretation of this agreement and any and all claims shall be subject to the Laws of the State of New York.
- 6: The address for submission of claims is:  
Hud-Son Forest Equipment  
PO Box 345  
8201 State Route 12  
Barneveld, NY 13304
- 7. Notices under this agreement must be in writing and sent by certified or registered mail;

# ***INTRODUCTION***

## *Purchaser Agreement*

*By accepting the delivery of your screener by Hud-Son Forest Equipment you agree that you will not modify your mill from it's original assembly.*

*This will VOID any warranty from Hud-Son Forest Equipment.*

Please fill out the information for quick reference:

Dealer: _____
Phone Number: _____
Address: _____ _____
Purchase Date: _____
Model: _____
Serial Number: _____

This manual is filled with the latest information and specifications at the time of publication. We have the right to make changes as they are needed. Any of the changes in our product may cause a variation between the illustrations and explanations in the manual and the item that you have purchased.

## *Safety Guidelines*

The reason for the safety section is to inform the operators and maintenance personnel, the precautions that should be taken while operating or servicing your screener. Please use good judgement and keep safety in mind when operating Hud-Son machinery.

Please read and follow ALL the instructions in this manual before operating the Hud-Son screener safely at all times. These instructions were produced for your benefit. Your ability to understand and follow the instructions is essential for the safe operation of this product. Always call your servicing dealer if you are in doubt before operation of any kind.

### *General Safety Procedures*

1 - Always wear safety glasses, ear protection, and gloves while operating or servicing the machine.



2 - Keep all body parts and foreign objects away from all moving parts. Do not reach into the machine while it is still operating. (Be Sure The Machine Is **OFF**.)

3 - Do not attempt to override any safety features on the machine.

4 - Inspect the machine before every use for wear, damage, and that it's functioning correctly. If the machine has been damaged or is not running correctly, DO NOT attempt to operate the machine. Repair or replace all parts when necessary.

5 - Do not wear loose clothing or jewelry while operating or servicing the machine.

6 - All replacement parts should be of the same specifications as the original parts on your Hud-Son machine.

7 - **All guards and covers must be in place before operating the machine.**

**(If applicable)**

8 - Before starting the machine be sure that it is set up properly.

9 - **DO NOT** operate or service any machinery while under the influence of drugs or alcohol, while tired or if you are unable to control your movements.

10 - All worn or damaged decals should be replaced.

11 - Any modifications to the machine requires written approval from Hud-Son Forest Equipment.

12 - The screener should only be used when it is on level stable ground.

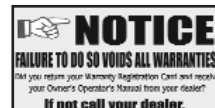
The safety rules are made for the benefit of the persons operating and servicing the machine, to prevent injury to oneself or others. Please review all setup and operating procedures before attempting to run the machine, whether covered in this manual or not, to ensure the safest operation of this product.

Hud-Son Forest Equipment is not liable for damage to property or personal injury due to the failure of any person and/or operator to follow the instructions and recommendations set forth in this manual or any other instructions or recommendations contained in other literature issued by other vendor manuals in the owner's kit.

### Product Safety Decals

The decals below are used on the Hud-Son Screener to identify warnings and prohibited actions. It is very important that you understand the meaning of the decals for your safety and the safety of others. Decals are to be replaced if worn or illegible.

CAUTION - Be EXTRA careful around these areas, unsafe practices may cause personnel injury or damage.	NOTICE - Please remember to send in warranty card and information.
DANGER - Be careful around any rotating parts, they may cause personnel injury or damage.	CAUTION - All debris need to be removed from machine before transporting, failure to do so may cause personnel injury or damage.
DANGER - Be sure to be very cautious and alert, these areas may cause personnel injury or damage.	
CAUTION - Operating equipment without guards may cause personnel injury or damage.	



## *Quick Reference Operation Sheet*

### **Maintenance**

- Change oil - 40 hours
- Clean/Change Air filter often in dusty conditions
- Keep gas can clean
- Keep belt at proper tension
- Keep overall machine clean
- Grease bearings every day
- Grease shaker screen every 3-4 hours

### **Before Starting**

- Set screener level using jack and side legs
- Use pins to keep screener from settling
- Check oil in engine
- When engine hood is up, make sure it is latched
- When engine hood is lowered , make sure it is latched
- Grease all fittings
- Do NOT over grease bearings
- Open gas valve
- Remove safety triangle or lights
- Check all bolts

### **In Operation**

- Do NOT over load, less is faster
- Do NOT drop large rocks on separator
- If Grizley bars become plugged, flip it with loader bucket to free the debris
- Top soil must be fairly dry to prevent sticking
- Only load from open side
- Work safely!

### **Before Moving (towing)**

- Clean all screeners
- Shut off gas on motor
- Lift all stabilizer legs
- Use safety triangle or lights
- Do NOT speed when towing
- Strap or chain down top Grizley bars
- Take corners slowly
- Use safety chains
- Tow with 2" proper ball only
- Make sure all debris are removed from screen



## Pre-operational Checks - Daily



8-M Screener loading side and screened material removal side.



Spoil side of Screener, all waste material comes off this side.



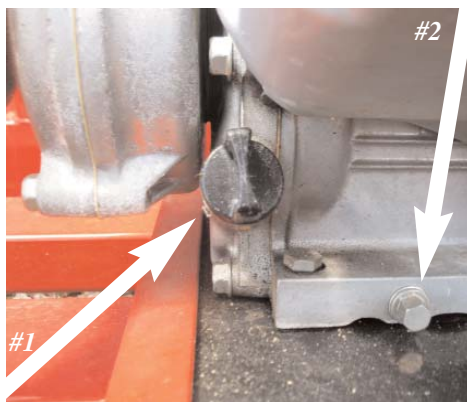
Owner's manual tube.



Engine hood in down position, keep down during operation.



Engine hood in raised position. Be sure to latch hood in raised position when servicing engine and machine.



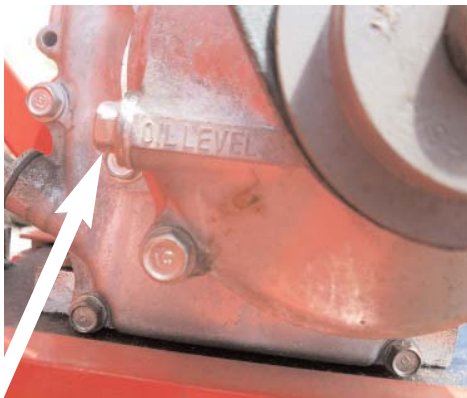
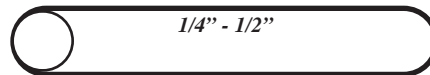
#1 - Engine oil check and fill port. #2 - Drain plug located on bottom.



*Air filter, clean daily, in dusty conditions clean every 3 to 4 hours.*



*Belt tensioner bolt, keep lubed to prevent rusting. To tighten belt screw in belt tensioner bolt. Do NOT over tighten. Belt should have 1/4" to 1/2" free play at center of belt.*



*Gear box oil level check plug.*



*Gear reduction box oil level check plug, machine must be level when gear box oil level.*



*Shaker assembly bearings, lube daily (two shots of grease per bearing).*



*Grizley bar lifting horn, check daily for cracks or damage on all Grizley bars and horn.*





*Grizley bars, keep clean during use. Use bucket to flip up and dump trash on ground.*



*Grizley rack swivel point. Grease at both ends twice weekly.*



*Loading side Dog Bone, grease daily. During heavy use, grease every 3-4 hours.*



*Dog Bone on spoil side/grease daily, top and bottom. During heavy use, grease every 3-4 hours.*



*Dirt screen, clean out small stones that may wedge in screen daily or as needed during use.*



*Inspect all Dog Bones every day for cracks or damage.*



*Screen retainer plate. One at each end and one in the middle. Check before operation each day for broken or missing bolts.*



*Fuel tank. Gasoline only.*



*Engine throttle lever*



*Engine On/Off switch.*



*Engine choke and fuel shut off. Turn off fuel before transporting on highway.*

## *Set-Up - Read Owner's Manual*



*Be sure to prepare a good working area, free of debris, large rocks and as level as you can grade it.*



*Set screener level using jack and side legs.*



*Use leg pins to keep screener from settling.*



*After leveling with jack set leg pin to bottom of leg holder to adjusted height needed.*



*Tighten set bolt after screener weight is on legs.*

### **In Operation**

- Do **NOT** over load, less is faster
- Do **NOT** drop large rocks on separator
- Top soil must be fairly dry to prevent sticking
- If rock Grizzly Bars become plugged, flip it with loader bucket to free the debris
- Only load from open side
- **Work safely!**



## *Transporting Topsoil Screener*

*Reverse set up procedure for transport. Be sure to remove all dirt and debris from around machine before moving. Remove dirt from side, back, front under screen area.*



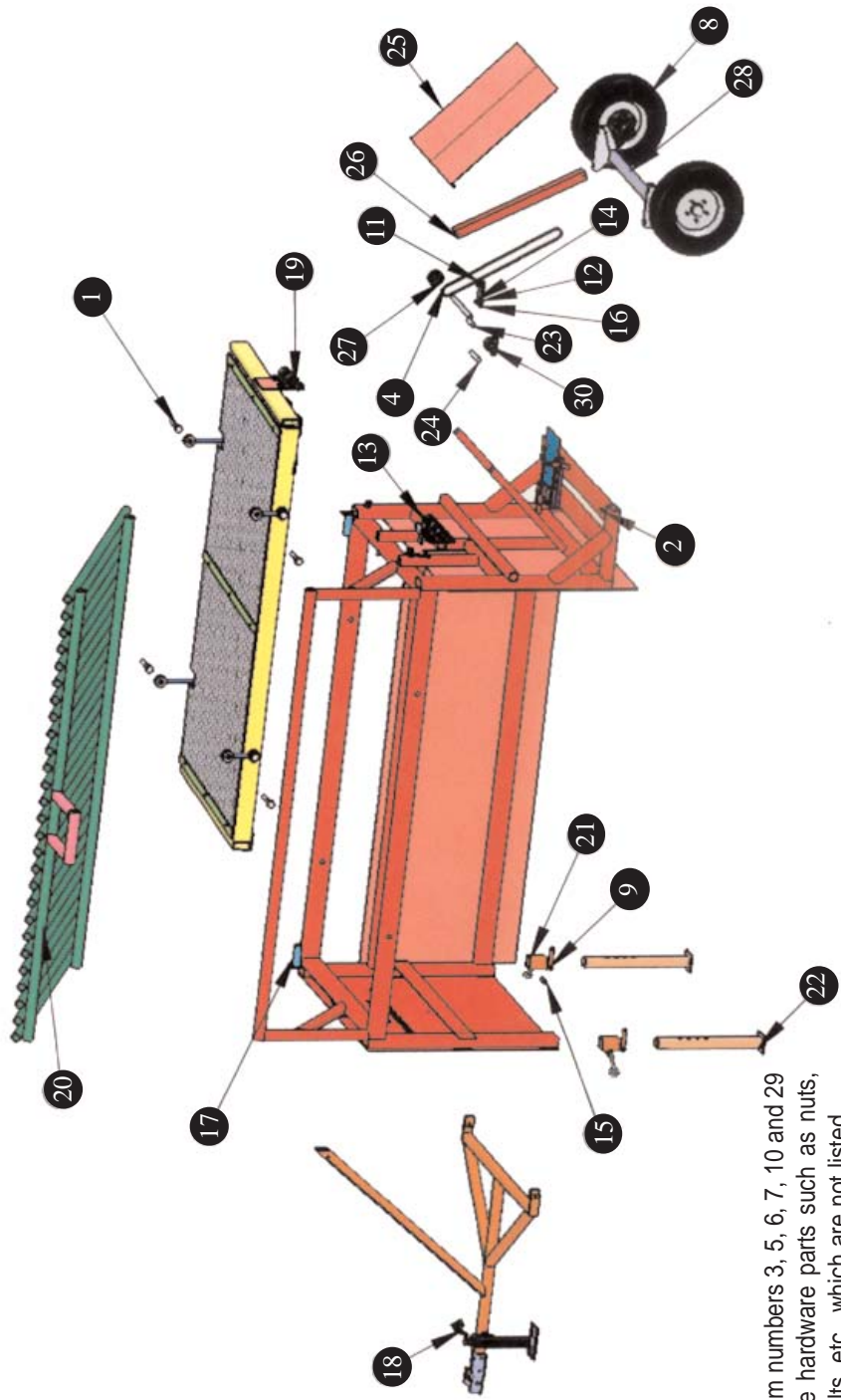
*Transport, clean all debris from machine before transporting.*

### **Before Moving (towing)**

- Clean all screeners
- Shut off gas on motor
- Lift all stabilizer legs
- Use safety triangle or lights
- Do NOT speed when towing
- Strap or chain down top Grizley bars
- Take corners slowly
- Use safety chains
- Tow with 2" proper ball only
- Make sure all debris are removed from screen

### ***Read Engine owner's manual for engine maintenance.***

Belt:	True Blue Belt 258-061
Oil:	SAE 10W-30
Gear Oil:	SAE 80W-85W-90
Grease:	Multi-Purpose Lithium
Tire Pressure:	90 lbs
Screen Size:	1/2-5/8-3/4-1"-1 1/4 -1 1/2-1 3/4



Item numbers 3, 5, 6, 7, 10 and 29 are hardware parts such as nuts, bolts, etc., which are not listed.



Item No	Part #	Description	Qty.
1	13471	HSC 1-8X4.5 Z5	4
2	18965	HCS5/8-18X3.25 YZ8	4
3	18968	HCS5/8-18X4YZ8	1
4	258-061	DRIVE BELT	1
5	33021	USS F/W 1" PLN	4
6	37024	NYLOCK NE 3/8-16Z	2
7	37036	NYLOCK 5/8"-11Z	7
8	3S140	TRAILER TIRE	2
9	66110	HITCH PIN W/COTTER 3/4"X4.5"	2
10	0700597	1" STEEL LOCK NUT	4
11	1133086	SAE 1/2 F/W Z	2
12	1136310	FHN 1/2-13 Z5	2
13	110120344	HCS 3/8 - 16X 1Z5	3
14	110120380	HCS 1/2-13X1 1/2 Z5	2
15	110120417	HCS 5/8 - 11X2 Z5	2
16	DH-2208	SINGLE PILLOW BLOCK MOUNT	1
17	M8-001	SCREENER FRAME ASSEMBLY	1
18	M8-002	SCREENER HITCH ASSEMBLY	1
19	M8-003	SHAKER SCREEN ASSEMBLY	1
20	M8-004	SCREENER TOP ASSEMBLY	1
21	M8-005	SCREENER POCKET ASSY	2
22	M8-005-00-1	ADJUSTABLE LEG	2
23	M8-007	PILLOW BLOCK SHAFT ASSY	1
24	M8-007-01	PILLOW BLOCK SHAFT	1
25	M8-008	HOOD ASSEMBLY	1
26	M8-008-02	BELT GUARD	1
27	MB33X1	SHEAVE: 33X1	1
28	RT-220-030	TRAILER AXLE	1
29	SS-0004	TRACK STOP CUT	1
30	UCP-205-16-Q	PILLOW BLOCK	4

**Warranty:**

Warranty registration cards must be completed and returned to Hud-Son Forest Equipment, Inc. within 30 days of purchase. Failure to do will void the warranty!!

Warranty claims must be registered with the Dealer/Distributor, and defective parts must be returned to the Dealer/Distributor at the owner's expense. The Dealer/Distributor will assume cost of the shipping one way in regards to any warranty claim. Freight is standard UPS ground. Any expedited services are at an additional charge and will be paid in full before shipping at the owner's expense. The shipping of warranty/parts out of the continental USA, will not be covered under warranty. The labor charge out of the continental USA is also not covered under warranty.

Screener has a 3 month warranty against manufactures defects.  
2 year warranty on engine.

**Warranty Claim Procedure**

All warranty claims that are done in the field will be handled as follows:

- 1 - Customer will call the Dealer/Distributor and acknowledge the problem.
- 2 - If the problem can be solved in the field, new parts will be shipped, invoiced and paid for. A credit will be given once the old parts are returned, if covered by warranty.
- 3 - If requested, parts to be replaced must be returned, at owner's expense within 30-days to receive credit.
- 4 - If the problem is deemed to severe to be fixed in the field by the customer, then the customer must bring the screener, at the owner's expense, to the closest Hud-Son Dealer/Distributor for repair. If the Dealer/Distributor is not qualified to make the repairs, then the equipment must be returned to Hud-Son Forest Equipment, Inc at the customer's expense.
- 5 - If the problem is deemed not to be a warranty problem, an invoice will follow for the parts that were replaced, as well as an invoice for any time spent on the mill by Hud-Son Forest Equipment, Inc staff and/or Dealer/Distributor staff.
- 6 - Any modification to the band mill that is performed by any personnel other than Hud-Son Forest Equipment, Inc direct staff voids the warranty.
- 7 - Any parts that are replaced without the discretion of the Dealer/Distributor voids the warranty on the part the customer is replacing and no reimbursement will be made.
- 8 - Parts purchased by the customer from an outside source, without prior approval from Hud-Son Forest Equipment, Inc will NOT be reimbursed.

**ALWAYS CALL YOUR SERVICING DEALER FIRST!!**

Dealers/Distributors carry parts and are very knowledgeable with the inner workings of your sawmill. Remember that modifying your mill or using parts that are Not Hud-Son Forest Equipment Inc approved, can void your warranty.

CE Approved Models: European Mills

Warranty on Parts ONLY!! No warranty on labor or shipping.

**Warranty/Service Information:**

Please contact our warranty department with any issues or to reorder parts, at 315-896-4316 or 1-800-765-7297. Hours of operation are M-F 8:00 - 4:30 est.

**IF NOT IN THE CONTINENTAL USA - HUD-SON DOES NOT PAY  
FREIGHT OR SHIPPING ON WARRANTY OR LABOR.**

800.765.SAWS • WWW.HUD-SON.COM

*Thank you for choosing*

**HUD-SON**  
FOREST EQUIPMENT

Hud-Son Forest Equipment, Inc.

8201 State Rt. 12., PO Box 345 Barneveld, NY 13304

Fax: 315.896.2627 • e-mail [info@hud-son.com](mailto:info@hud-son.com)

*We have an onsite technician available to answer any questions  
Monday - Friday 8 to 4:30 and Saturday from 8 to noon. 315-896-7297.*

800.765.SAWS • WWW.HUD-SON.COM