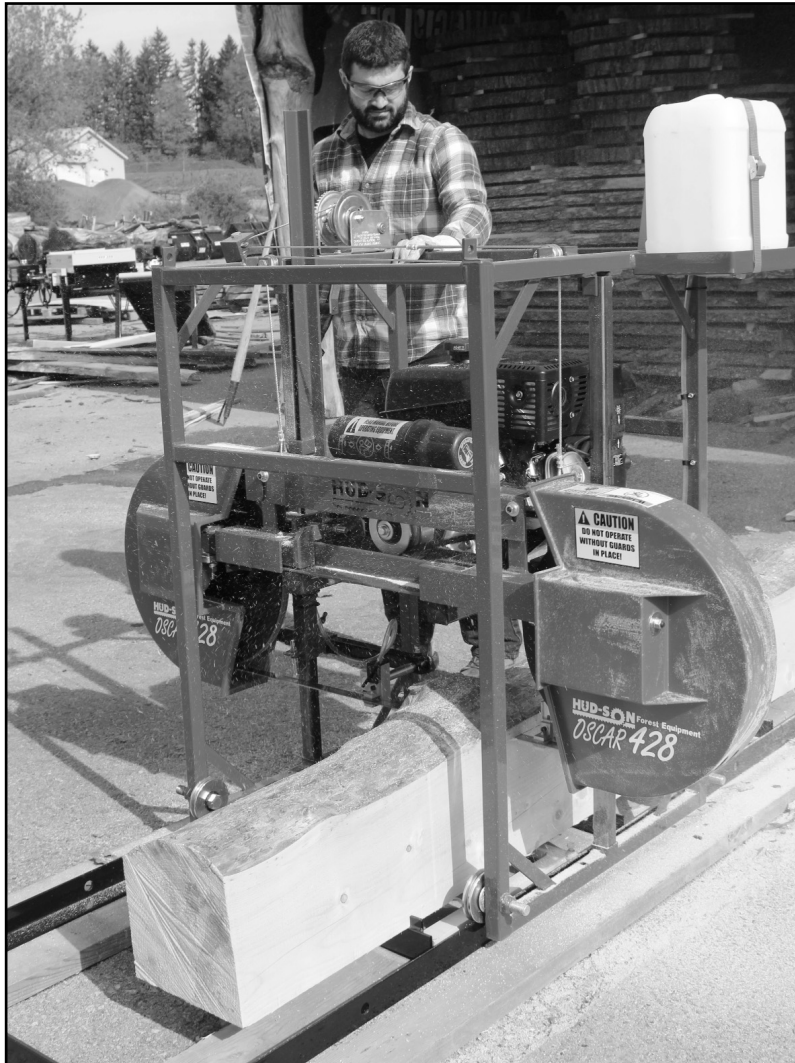


# **H HUD-SON**

## **FOREST EQUIPMENT**



**WWW.HUD-SON.COM • 800.765.SAWS**



## **OSCAR 221 & OSCAR 428 SAWMILL OPERATOR'S MANUAL**

**8201 STATE ROUTE 12 • PO BOX 345 • BARNEVELD, NY 13304**

# A N O T E F R O M H U D - S O N

Thank you for your purchase of a sawmill from Hud-Son Forest Equipment. We are pleased that you chose us as your supplier of your forestry equipment.

Hud-Son Forest Equipment has been in the forestry business since 1965 and prides itself on developing new and innovative products for the forestry business.

Our product line is always transforming so please check us out on the web at [www.hud-son.com](http://www.hud-son.com) for the up and coming developments we are making.

Should you have any questions with the setup of your mill or have any technical questions please feel free to contact our onsite technician Monday - Friday, 8 to 4:30 and Saturdays from 8 to noon eastern time at 800-765-7297. We are always available to our customers for any questions or concerns they may have about their equipment.

## C O N T E N T S

2	. . . . .	.A note from Hud-Son
3	. . . . .	.Introduction
4	. . . . .	.Safety
7	. . . . .	.Set Up
7	. . . . .	.Welded Track Assembly
9	. . . . .	.Transport
15	. . . . .	.Care & Maintenance
18	. . . . .	.Parts & Warranty
23	. . . . .	.Trouble Shooting
25	. . . . .	.Parts List
27	. . . . .	.Sawmill Drawings

# INTRODUCTION

## Purchaser Agreement

By accepting the delivery of your sawmill by Hud-Son Forest Equipment you agree that you will not modify your mill from it's original assembly. This will VOID any warranty from Hud-Son Forest Equipment.

Please fill out the information for quick reference:

Dealer: _____
Phone Number: _____
Address: _____
_____
Purchase Date: _____
Model: _____
Serial Number: _____

This manual is filled with the latest information and specifications at the time of publication. We have the right to make changes as they are needed. Any of the changes in our product may cause a variation between the illustrations and explanations in the manual and the item that you have purchased.

### DISPUTES

All disputes, claims and causes of action arising out of the delivery, use, or warranty claims for personal injury and or property damage must:

1. Claimant must provide a written notice of the claim or dispute to the company (at the address below) at least 30 days after the claim arose prior to commencement of any action;
2. Company has 60 days to make a decision on the claim and will provide a written response to claimant;
3. No action may be commenced until after the company has provided its decision on the claim;
4. All claims against the company for any cause related to delivery, design defects, repairs, use of the equipment or warranty shall

be filed in Supreme Court, Oneida County, State of New York. The parties may file for Arbitration in Oneida County New York after consent by both parties.

5. Construction and interpretation of this agreement and any and all claims shall be subject to the Laws of the State of New York.

6: The address for submission of claims is:

Hud-Son Forest Equipment  
PO Box 345  
8201 State Route 12  
Barneveld, NY 13304

7. Notices under this agreement must be in writing and sent by certified or registered mail.

## Safety Guidelines

The reason for the safety section is to inform the operators and maintenance personnel, the precautions that should be taken while operating or servicing the Hud-Son Mills. Please use good judgement and keep safety in mind when operating Hud-Son machinery. Please read and follow ALL the instructions in this manual before operating the Hud-Son Mill safely at all times. These instructions were produced for your benefit. Your ability to understand and follow the instructions is essential for the safe operation of this product. Always call your servicing dealer if you are in doubt before operation of any kind.

### General Safety Procedures

1 - Always wear safety glasses, ear protection, and gloves while operating or servicing the machine.



2 - Keep all body parts and foreign objects away from all moving parts. Do not reach into the machine while it is still operating. (Be Sure The Machine Is OFF.)

3 - Do not attempt to override any safety features on the machine.

4 - Inspect the machine before every use for wear, damage, and that it's functioning correctly. If the machine has been damaged or is not running correctly, DO NOT attempt to operate the machine. Repair or replace all parts when necessary.

5 - Do not wear loose clothing or jewelry while operating or servicing the machine.

6 - All replacement parts should be of the same specifications as the original parts on your Hud-Son machine.

7 - All guards and covers must be in place before operating the machine.

8 - Before starting the machine be sure that it is set up properly.

9 - DO NOT operate or service any machinery while under the influence of drugs or alcohol, while tired or if you are unable to control your movements.

10 - All worn or damaged decals should be replaced.

11 - Any modifications to the machine requires written approval from Hud-Son Forest Equipment.

12 - The sawmill should only be used when it is on level stable ground.

The safety rules are made for the benefit of the persons operating and servicing the machine, to prevent injury to oneself or others. Please review all setup and operating procedures before attempting to run the machine, whether covered in this manual or not, to ensure the safest operation of this product.

## CAUTION BEFORE, DURING AND AFTER OPERATION



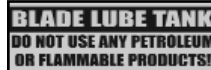
Check the engine compartment for sawdust and wood trash build up in and around the engine compartment and the exhaust area to prevent any possible fires from starting due to excessive build up. Always clean the sawdust out from under the machine after shut down and be sure there is no sawdust build up near or around the muffler area.

Hud-Son Forest Equipment is not liable for damage to property or personal injury due to the failure of any person and/or operator to follow the instructions and recommendations set forth in this manual or any other instructions or recommendations contained in other literature issued by other vendor manuals in the owner's kit.

### Product Safety Decals

The decals below are used on the Hud-Son Saw Mills to identify warnings and prohibited actions. It is very important that you understand the meaning of the decals for your safety and the safety of others. Decals are to be replaced if worn or illegible.

<p><b>CAUTION</b> - Be EXTRA careful around these areas, unsafe practices may cause personnel injury or damage.</p> <p><b>DANGER</b> - Be careful around any rotating parts, they may cause personnel injury or damage.</p> <p><b>DANGER</b> - Be sure to be very cautious and alert, these areas may cause personnel injury or damage.</p> <p><b>CAUTION</b> - Operating equipment without guards may cause personnel injury or damage.</p>	<p><b>BLADE LUBE TANK</b> - Be sure to use the correct lubrication, if incorrect lube is used it may cause personnel injury or damage.</p> <p><b>NOTICE</b> - Please remember to send in warranty card and information.</p> <p><b>CAUTION</b> - All debris need to be removed from machine before transporting, failure to do so may cause personnel injury or damage.</p> <p><b>CAUTION FIRE HAZARD</b> - Keep all sawdust away from motor.</p>
--	--



## Receiving and Unit Inspection

1 - Upon receiving your unit do a walk around and visual inspection of the unit. Make note of any damage and contact us immediately with any issue you may have. Note: All equipment is assembled, tested and inspected before shipping. Damage can occur during transit, which could cause the unit to not operate correctly.

## Unpacking Unit

- 1 - Flat bed trailer delivery: remove straps or chains securing the unit.
- 2 - Remove lag screws and strapping that secures the machine to the skid.

### Moving the Unit

(Forklift is needed for track units)

- 1 - Machine needs to be lifted at the lift point, see picture for points.
  - a. Use a safety device for lifting to avoid any damage/injury.
- 2 - Move unit to operator's site, lower unit and remove unit from forks.



## Before operating the Hud-Son Saw Mill the following procedures need to be performed:

- 1 - Check oil and fuel levels
- 2 - Check blade lubrication and hydraulic levels (if applicable)

**DO NOT USE:** petroleum products, petroleum based products, flammable products, a vegetable oil based product. The above products mixed with water or straight will cause damage to your mill. The fluid will be slippery between the blade and wheel belting causing blade to come off.

**DO USE:** In The Summer Months tap water. If there is a problem with pitch build up on the blade, add 1 oz. of dish soap or pine sol to 1 gallon of tap water. This will help keep the blade clean and cooler.

In the Winter Months water will freeze in the lube tank. Use regular windshield

washer fluid (usually blue in color) If there is a pitch build up problem add the 1 oz. of dish soap or pinesol.

**Adjustment:** Before starting the engine, adjust the flow of lube to the blade by adjusting the flow shut off valve so there is a constant drip. If more lube is necessary, continue to adjust the valve until the desired flow is acquired.

- 3 - Be sure the blade is sharp and tight
- 4 - Be sure all levers and switches are in the neutral/center position before starting the engine (if applicable)
- 5 - Be sure all persons are clear of the equipment
- 6 - Make sure the unit is level and stable.

## Start Engine Procedure

- 1 - Summer Use: Be sure to let the unit idle for at least 5 minutes before any use.
- 2 - Winter Use: Be sure to let the unit idle for at least 15 minutes before any use.
- 3 - If the unit has been sitting for a period of time, allow the unit to run long enough to have the oil do a complete circulation before use.

## Steps for Setting-Up the Hud-Son Saw Mill

### A. Machine Set-Up (ground track unit)

1 - For best results and easier set-up, the mill location should be level and free of obstructions.

2 - A level cement pad is the best option, but square timbers also work well. You will need to support the track at each joint and under each cross member.

3 - You will need to be sure that the mill is level from front to back and side to side. The better the mill is supported the better the mill work.

4 - There should be a 4 ft. clear work area around the entire mill.

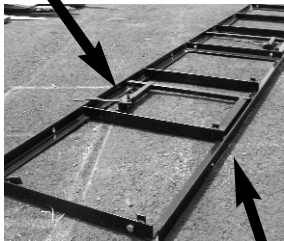
### B. Welded Track Assembly

1 - Dogs need to be facing in the same direction, all the movable dogs need to be on the operators side of track.

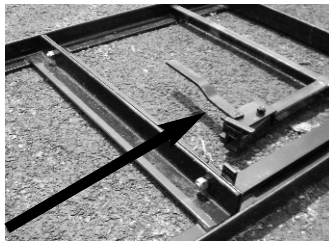
2 - There are additional holes in the track so that the dogs can be moved to different positions.

3 - The tracks are bolted together using bolts and nuts. The Oscar 221 and 428 mills will have 2 bolt/nuts: Line up the tracks so that the center holes align. Using the provided bolts put them through the holes and finger tighten the nuts. Adjust the track height so that the 2 pieces of track meet flush and level. Work one side then the other, once level has been achieved, check the track to see if it aligns vertically. If the track is not aligned correctly use a hammer to tap it into position. Do not tap on vertical rail. Once this is accomplished tighten the bolts securely.

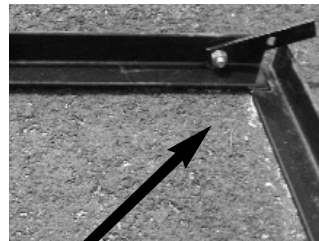
Moveable dogs on one side



Track on level ground, free of obstructions

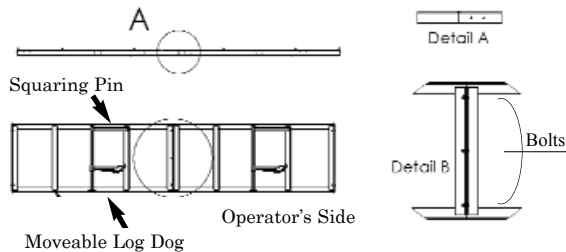


Bolted together Track  
Flush & Level



Track Stops

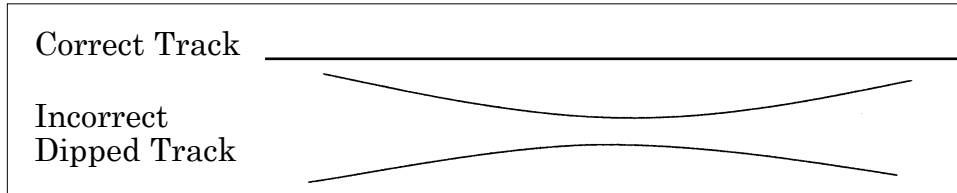
### Set-Up and Operation



***Correct Track Set-up***

4 - The track comes with four track stop tabs. They consist of the track stop tab bolt and nut. Place the tracks stops in the four end corners of on the inside of the track. Place them on the inside of the track secure them into place with the bolt and nut. The track stop tabs are placed at an angle over the track to prevent any further travel of the mill head.

5 - To saw a board accurately, the track needs to be straight and flat. To obtain this, use a string tied tight from end to end or a level. If the track/trailer has a crown or dip, you will not be able to saw a straight board.



C. Machine Set-Up (trailer unit) for Oscar 428, 16' or 20' Torsion Axle Trailers.

1 - Set-up area should be relatively level and clear of debris. The head will need to roll down the track so be sure the area is free of obstructions.

2 - Lower the trailer jack and raise the jack until the coupler is free of the hitch. Once this is done remove the unit from the vehicle. Using the "T" handles, loosen the bolts and lower the front 2 legs.

3 - Do the same to lower back 2 legs, and level the trailer.

4 - Lower the center 2 legs last, the track should already be level.

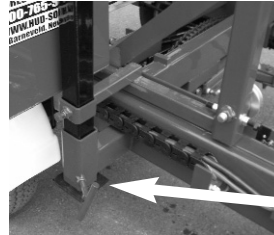
5 - On the 221/428 models, you will need to unbolt the head from the track. The travel bolts are located behind your guide arms at the base of the mill head.

6 - Once the head is unbolted from travel position, roll it down the track to be sure it is level. If your head rolls on its own you will need to adjust your leveling legs. Return the head to the center of the trailer and re-bolt or raise the center legs to lock head into place. Once the head is secure you can reset the leveling legs.

**\*\*Always secure the head before re-leveling the trailer\*\***

7 - Once the trailer is level, the head should not roll on its own. If your trailer is not level, it will not saw your boards correctly. Refer to previous instructions for proper set-up.

Correct trailer set up. All legs are level; head should not move on its own.



Legs are locked into place, head will not move.

D. Setting Head on Track (If Applicable) Ground Models

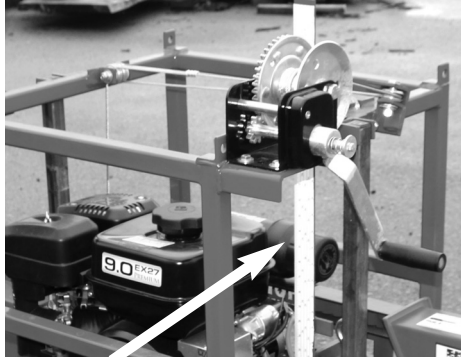
Once your track is level, you are ready to set the head on the track. Once again, be sure the area is still free and clear of obstructions. You will want the head to roll freely down the track.

1 - Install the head with operator's side on the same side as the moveable dog. The discharge side is the side with the squaring pins.

2 - Raise the head 3 inches and roll from one end to the other. The head should roll smoothly along the track. If the head "thumps" when it passes over the track joint, check to make sure



the tracks are level. Re-level the track and try rolling the head again. Also be sure to watch the track as you roll the head, if the track moves, you will need to support the track in that area.



Correct head placement; Operators side is on side with the scale stick.



Squaring arm on right, adjustable dog on left.



Pictured is a close-up of the guide  
It shows all the bolts and bearings that can possibly be adjusted. Note how the teeth are outside of the guide.

## Transport Instructions

### Follow all the steps to safely transport the Hud-Son Saw Mill Trailer Model

- 1 - Lock head into travel position.
- 2 - Raise extension legs and lock in upright positions.
- 3 - Raise rear legs of frame and pin in raised position.
- 4 - Raise jack to desired height, remove pin and rotate to horizontal position, hook hitch to vehicle. Plug in lights and brakes. Hook-up safety chains and break-away switch. (If applicable)
- 5 - Lift front legs and lock in transport position.
- 6 - Be sure to clean unit of all loose debris, including all bark, sawdust and dirt.

## Set-Up and Operation

### E. Tensioning the Blade on all Models

NEVER tension your blade with the engine running. Your mill is shipped to you without any tension on the blade. If there is tension left on the blade for a period of time, it can cause flat spots in the belt.

This will cause the blade to fall off the wheel. Always remember to de-tension your blade when you are done sawing for the day.

1 - For all mills (not 52 or 60), make sure blade is flush with back of sheath (may have moved in shipping process).

2 - To tension or loosen the blade, see figure below.

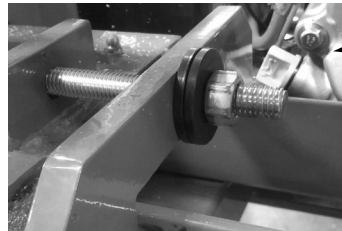
3 - Turn the adjusting bolt or stud, clockwise until 30-35 pounds of torque is achieved. The recommended tool for this is a torque wrench. By hand, rotate blade 3-4 full revolutions; this centers the blade on the wheels.

4 - With gloves on, pull up on the blade at the center guard. Allow for no more than a 1/4" movement up or down on the blade.

5 - Check that guides are not so tight they cause the blade to heat up. If this occurs re-adjust guides.

6 - Perform a simple test call the "Flutter" test. Put the guards on and then run the engine at full RPM's (be sure the blade is not in a cut during this test) and watch the blade under the blade guard. The blade must run straight, if it does not, shut the engine down and apply more tension. Keep in mind that over tensioning will also cause the blade to flutter. You should have attained proper tension around 30-35 pounds.

6 - A tensioned blade should come off the bottom of the band wheel and run straight across to the other band wheel, so there is NO sag in the blade between the two wheels.



Tension nut for  
smaller units  
(221/428)

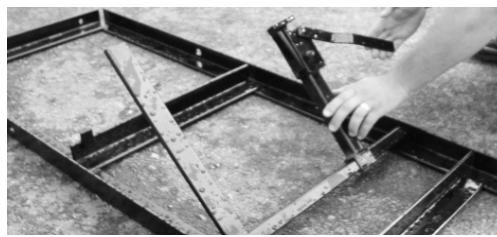
### F Setting Logs

Once the track is set, the head is in place and the blade is tensioned correctly, you are almost ready to cut.

1 - Place the log determined by the mills size, on the center of the track. Using the log dogs secure the log to the track. Be sure to dog the log high enough (1/2" way up the log) to ensure the log does not move. If the log is too big for the log dog to hold in place, but your sawmill head still rolls unobstructed use the "Cheater" to hold it. (For use on the 221/428 only).



Cheater

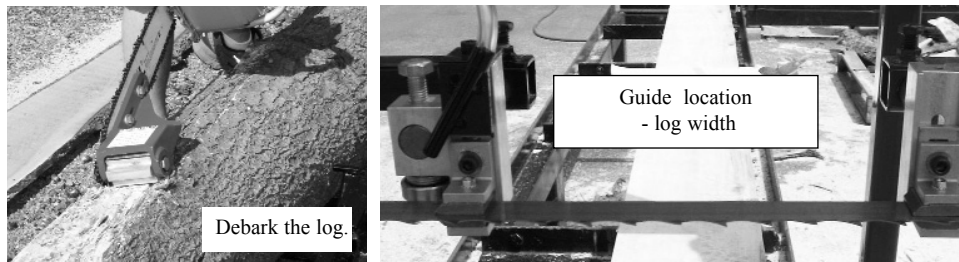


Squaring Arm and Adjustable Dog

## G. Getting Ready to Cut

Now is the time to debark or clean your log. This can be achieved by the simple chain-saw attachment, called a Log Debarker (available through Hud-Son Forest Equipment Inc.) or you can pressure wash or use whatever method available to remove any mud or bark from the logs. By debarking and cleaning your log it will extend the life of your blade.

1 - Adjust the Hud-Son guides so that they are slightly (no more than 2 inches) wider than the maximum width of the log.



(Note: as you cut slabs, boards or squares you may need to adjust the guide to ensure the best performance and quality cuts)

2 - Find the top of the log with the blade. Remember, that you may have cheaters in place so be sure these are clear when making the first cut. You will be removing the top portion of the log. (top slab)

3 - On the manual lift models, crank your head down to the desired height and click up one notch to set the head. Make sure your blade will clear your dog assembly.

4 - Start your engine, let it idle for at least 5 minutes. (Refer to the engine manual for proper engine maintenance)

5 - With the engine in idle position, increase the throttle to start the blade. Sawing should always be done with the engine in full throttle.

6 - Gently push the saw head through the log, pushing on the head frame. If the engine starts to labor, you are going too fast, slow down. Go slow through burls and knots as the engine may bog down through these parts of a log.

7 - When you are at the end of the log, power down the engine, crank the head up so that will clear the log and roll back to the front of the log. For ease of operation, put the slabs on the operator's side of the mill, this way you will not have to dig through sawdust for your lumber.

8 - You now have a flat surface on top of your log, remove the cheaters (if applicable), you will no longer need them, as long as the log dogs will hold the log in place.

9 - Set your log dog assembly so that they are standing in the track. Turn the cut side of the log, using a cant hook,  $\frac{1}{4}$  of a turn. The flat side must be flush against the squaring pin to assure a square cant.

10 - Adjust the log dog at an angle to the track so that the blade can pass over the top, but so that the dogs are effective in securing the log.

11 - Once again, increase the engine throttle to start the blade, and saw another slab. You will repeat step (I) until your log is squared into a cant. You may now saw your dimensional lumber.

12 - Steps (I-K) may not be applicable if a cant is not desired.



Place flat side, flush against squaring pin to ensure a square cant.



Adjustable dog, set at an angle so that log can be sawed without interference.

#### H. Cutting Dimensional Lumber

You can cut down to a 1" thick bottom board. To achieve this you will use the moveable side of the dog and the short squaring pins welded in the track.

1 - You will need to determine the size lumber that can be cut and how many, then using the scale start sawing your lumber. Lower the blade to desired thickness and saw your board. Repeat this process until all lumber is cut.

2 - You may need to turn your cant to make the desired lumber.

#### I. Replacing the Blade

No matter how well you care for your blade, they will dull after time and need to be changed. Longevity of your blade depends on how well you maintain it.

1 - The engine needs to be stopped, turned off and the key removed, this ensures that the engine can not be accidentally turned back on. On engines with manual start, you will need to remove the spark plug wire prior to servicing. On electric motors a lockout/tagout should be used.

2 - Loosen and remove nuts so you can remove the outside and center guards on all models.

3 - Loosen band blade tensioner bolt until adjusting bolt is flush with threaded plate.

4 - With a gloved hand, put hand on the top of the band blade and push down. (Use extreme CAUTION, dull blades are still sharp and may be hot).

5 - Remove band blade from both band wheels and take out of carriage.

6 - Inspect new or sharpened blade, be sure blade teeth are facing in correct direction. Teeth should always point away from the operator. (Towards discharge chute). Be sure to wipe blade clean of all oily substance prior to installing. A clean, dry rag or cloth works best.

7 - Starting from your stationary wheel set the blade on the wheel then thread through your guides. Work the blade over the tensioning wheel until the blade is set.

8 - Lightly tension the blade to remove the slack, and then turn the wheel in the direction of travel (towards the operator) 3-4 rotations to be sure the blade is tracking properly on the wheel.

9 - Once the new blade is tracking properly, replace the guards and re-tension the blade as previously stated.

#### J. End of Processing Lumber

1 - Completely decrease engine throttle and turn engine switch, red one, to off position, or if equipped with fuel shut off turn that to the off position.

2 -The blade will continue to turn automatically and will coast to a stop.

3 - If you are done sawing for the day, de-tension the blade, so that you do not have flat spots. Lower the mill head so that the lift cable has slack.

#### K. Blade Maintenance

Longevity of band blades depends on how well they are cared for. Using a lube tank, Log Debarker, band blade sharpener, tooth setter, all will help keep your blade in top condition. Be sure to clean your logs by using a pressure washer or debarker to keep them free of mud and debris.

#### L. Blade suggestions

1 - Never force a dull blade, this will result in overheating of the blade and result in wavy lumber.

2 - Overuse of a blade jeopardizes the ability of the saw blade to be re-sharpened.

3 - A new blade may stretch after cutting and may have to be re-tensioned to assure quality lumber.

4 - De-tension the band blade after each day of cutting.

5 - Never operate the mill without the guards in place.

The Hud-Son Forest Equipment, Inc sawmill comes with a band blade and we have an excellent re-sharpening program for your band blade.

#### M. Adjusting Sawmill Guides

##### 1 - Purpose of the Guides

- Superior Hud-Son guide design. Supports on the top, bottom and back of the blade, where can the blade go? This guide design limits the chance of blade wander.

- The lower blade holds the blade up and decreases the chance of "diving". Most companies only use a top support.

- The closer to the log the guides are to the log the better support the blade has as it cuts.

##### 2 - Adjusting the guides

- Tools that will be needed:

- 1) 17 mm wrench

- 2) 17 mm socket

- 3) 9/16" wrench

- 4) 3/16" Allen wrenches

- All guides are aligned and set at the factory, but occasionally they get moved out of adjustment in shipping or after a period of usage. It is important that they be checked often for proper alignment and adjusted correctly.

- To adjust your guides correctly you must first tension the blade properly as previously described. A tensioned blade should come off the bottom of the band wheel and run straight across to the other, so there is NO sag between the two wheels.

3 - Now that the blade is tight, slightly loosen the Allen head that holds the guide shoes, so that they slide up and down freely. Now loosen the bolt that fastens the aluminum guide bracket to the guide rod, so that the guide bracket can be moved in, out and it can be rotated in either direction.

4 - Set the guide bracket so that the back bearing is on the same plane as the blade, so that if the blade were to wander back it would hit the back bearing evenly across the middle of the roller. If the bearing needs to be adjusted up or down, loosen the bolt that holds it to the guide bracket and space it in either direction using the washers that are on either side of the bearings.

5 - Once the bearing is set, position the guide bracket so that the bearing is 1/8" behind the back of the blade. Once the bearing is in position, tighten the bolt on top of the guide bracket in to place. Be sure the guide is 90° to the blade.

6 - The guide shoes are to be set using a sheet of paper to gauge the spacing. Place the paper between the shoe and the blade, slide the shoe so that it is pinching the paper and tighten the bolt so that the shoe is set in place. Do the same on the bottom of the blade. Note that you do not want the shoe to be pinching the blade so hard that it is prohibiting blade travel

7 - Make sure that all nuts and bolts are tightened firmly.

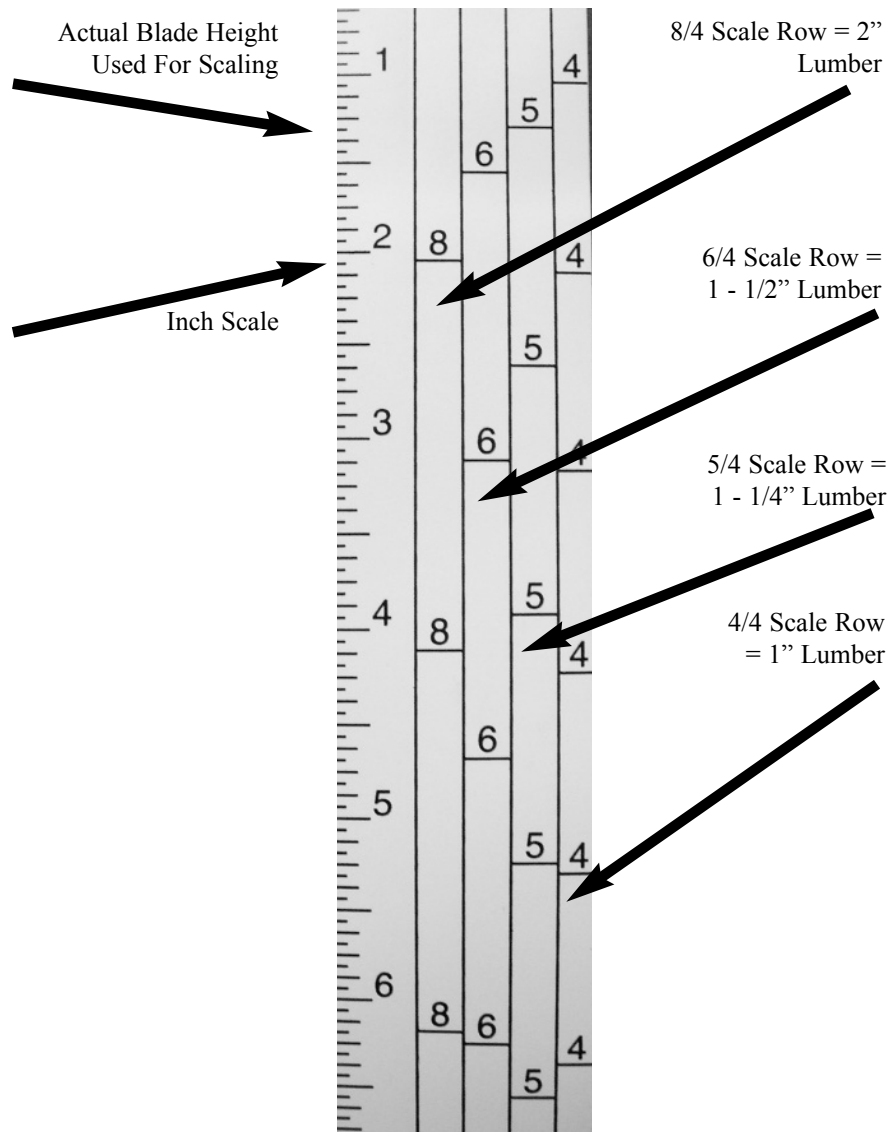
## N. Using the Lumber Scale

1 - All Hud-Son sawmills are equipped with a Lumber Scale. The scale is used to make the dimensioning process simple. The scale incorporates 4 separate scales with the blade kerf factored in for each increment.

Scale	Resulting Thickness
4/4	1"
5/4	1 - 1/4"
6/4	1 - 1/2"
8/4	2"

Note:

The 1" standard ruler does NOT account for kerf. When using this scale be sure to plan on kerf. 1" increments will result in approximately a 7/8" end result, depending on what blade is being used.



### Care and Maintenance

Hud-Son Saw Mills require a certain amount of care and maintenance, so that it may continue to perform at its best. If you are not confident in your ability to perform the maintenance that is required, please look into having a professional come in and perform the work for you.

#### Cleaning your Saw Mill

- ✓ Using an air hose, blow off all loose debris that builds around the unit.
- ✓ Use extreme caution when cleaning the mechanism.
- ✓ Never use flammable or combustible materials to clean the mill.
- ✓ Be in a well ventilated area. Always wear protective equipment to prevent injury.
- ✓ Use proper procedure to dispose of waste materials.
- ✓ Wipe down the idler and pulley wheels using an air hose, brush or rag.
- ✓ Clean and inspect blade guides.

#### Preventative Maintenance

- ✓ For electrical engine follow the correct Lockout/Tagout procedures.
- ✓ Check for correct blade tension guaranteeing that 30-35 pounds of torque is on tensioning bolt/nut.
- ✓ Check blade tracking, a 1 - 1/4" blade should be centered on band wheels and back of blade should be flush with bandwheel.
- ✓ Check bearing, idler and pulley wheels for wear. Signs of wear are:
  - Excessive heat
  - Squeaking sounds
  - Looseness
- ✓ Grease idler, pulley wheels and bearings.
- ✓ Grease blade tensioner shaft.
- ✓ Grease the lift tubes.
- ✓ Check all belts for wear and to make sure the belt tension is "taut". Belt should have no more than 1/2" deflection.



**MAINTENANCE SCHEDULE CHART**  
**Service Recommendations for Hud-Son Sawmills**

Service Item	Daily	40 Hours	See Manual
Check Engine Oil Level	✓		
Check/Clean Engine Air Filter			✓
Check Hydraulic Oil Level (fill 1" from top) if applicable	✓		
Clean Unit of Bark, Saw Dust, and other Debris	✓		
Lubricate Grease Fittings and Oil Points (see Diagram for locations)		✓	
Check Tire Pressure - Upon transport (if applicable)		✓	
Check Cylinders and Seals for Leakage	✓		
Check Feed Chains for tension (if applicable)	✓		
Clean Battery Connections		✓	
Check Wiring and Connections for Corrosion and Decay		✓	
Lubricate Chains (if applicable)		✓	
Check Blade Sharpness	✓		
Fuel - fill as needed	✓		
Blade Lubricant - fill as needed - Refer to 2A on page 6	✓		
Check hoses/gauges for damage, cracks, leakage (chaffing, dry rot, cracks, replace hoses if applicable)	✓		

<p>* Change engine oil after 8 hours of operation on a new engine (break -in period)</p>	<p><b>CAUTION!</b>  Maintenance Procedures requiring special training or tools should be performed by a trained technician.</p>
--	---

A routine inspection of the entire machine is encouraged. Check to see if all fittings are tight and secure. Make sure all nuts are tightened. Check to see any damage that may need to be repaired before and further damage occurs. Routinely checking the equipment and proper maintenance will help in keeping the Hud-Son Saw Mill running to the best of its ability.

## Parts and Warranty

### Mill Replacement Parts

Out sourced components will be warranted by the respective company for a period equal to the warranty in place at the time of shipping, as shown below from date of purchase.

Description	Part Number	Warranty
Gasoline Engine	ENG-02-09SE, ENG-02-07DT	2 Years - call your servicing Dealer.
Electric Engine		1 Years - call your servicing Hud-Son Dealer.
1.5" Pillow Block Bearing, 1" Pillow Block Bearing	BEA-01-24	6 Years - call your servicing Hud-Son Dealer.
Drive Belt	BEL-01-24, BEL-02-58-077, BEL-02-58-085, BEL-02-58-092	1 Year - call your servicing Hud-Son Dealer.
Rubber Wheel Belting	BEL-02-58-049, BEL-02-58-56.5	1 Year - call your servicing Hud-Son Dealer.
Urethane Wheel Belting	BEL-04-58-049, BEL-04-58-56.5, BEL-04-58-077	1 Year Defect - Not Melted
Tapper Lock, SK Bushing	BUS-01-24-44	1 Year
Drive Belt Tensioner (Idler Pulley)	WHE-03-06-48-1250	1 Year
Guide Assembly, Left/Right (see breakdown for parts list)	BLG-02-01	30 Days Call your servicing Hud-Son Dealer.
Scale Sticker	DEC-36-01	1 Year
Site Glass Assembly	KIT-001	1 Year
Cable Lift Kit Assembly	CAB-01-0532A	1 Year
Band Blade	BLA-167-20 (BLA-LENGTH-WIDTH IN 16THS)	1-800-765-SAWS
1 -1/2" Shaft	SHA-01-12.5 (SHA-01-LENGTH IN INCHES)	6 Years - Call your servicing Hud-Son Dealer

Bolt for Track Wheel	HAR-12-12-64	2 Years - call your servicing Hud-Son Dealer.
Track Sections	MIL-15-01-2128	1 Year - call your servicing Hud-Son Dealer.
Axles (Trailer Models)		1 Year - call your servicing Hud-Son Dealer.
Sprockets & Chain		90 Days - Call Hud-Son and ask for the warranty department
Winch	WIN-01-2000, WIN-02-2500 (ELECTRIC)	1 Years - call your servicing Hud-Son Dealer.
Clutch	(HFE-121)CLU-02-12 (HFE 30/36, OSCAR MODELS) -CLU-02-16 OSCAR 52/60 CLU-02-18	30 days - call your servicing Hud-Son Dealer.
Band Wheel	WHE-02-44-256	1 Year - call your servicing Hud-Son Dealer.
Log Dog Only	MIL-10-02S	2 Years - call your servicing Hud-Son Dealer.
Track Wheel w/Replacement Bearing	WHE-40-12-53	2 Years - call your servicing Hud-Son Dealer.
Replacement Bearing for Track Wheel	BEA-03-12-24T	2 Years - call your servicing Hud-Son Dealer.
Pulley for Lift Cable	CAB-01-0532	1 Year - call your servicing Hud-Son Dealer.
Cheater	Oscar 221 - Cheater, Oscar 428 - Cheater	2 Years - call your servicing Hud-Son Dealer.
Guide Pins	MIL-10-0000-001	2 Years - call your servicing Hud-Son Dealer.
Modular Guide Tube	TUB-20-09, TUB-20-20, TUB-20-35	2 Years - call your servicing Hud-Son Dealer.
Bolt on Lube Tank	MIL-07-001	2 Years - call your servicing Hud-Son Dealer.

## Parts and Warranty

### Warranty:

Warranty registration cards must be completed and returned to Hud-Son Forest Equipment, Inc. within 30 days of purchase. Failure to do will void the warranty!!

Warranty claims must be registered with the Dealer/Distributor, and defective parts must be returned to the Dealer/Distributor at the owner's expense. The Dealer/Distributor will assume cost of the shipping one way in regards to any warranty claim. Freight is standard UPS ground. Any expedited services are at an additional charge and will be paid in full before shipping at the owner's expense. The shipping of warranty/parts out of the continental USA, will not be covered under warranty. The labor charge out of the continental USA is also not covered under warranty. All mills have a 2 year warranty against manufactures defects. Excluding the H360, and Oscar 52, they have a 1 year warranty.

### Warranty Claim Procedure

All warranty claims that are done in the field will be handled as follows:

- 1 - Customer will call the Dealer/Distributor and acknowledge the problem.
- 2 - If the problem can be solved in the field, new parts will be shipped, invoiced and paid for. A credit will be given once the old parts are returned, if covered by warranty.
- 3 - If requested, parts to be replaced must be returned, at owner's expense within 30-days to receive credit.
- 4 - If the problem is deemed too severe to be fixed in the field by the customer, then the customer must bring the saw mill, at the owner's expense, to the closest Hud-Son Dealer/Distributor for repair. If the Dealer/Distributor is not qualified to make the repairs, then the equipment must be returned to Hud-Son Forest Equipment, Inc at the customer's expense.
- 5 - If the problem is deemed not to be a warranty problem, an invoice will follow for the parts that were replaced, as well as an invoice for any time spent on the mill by Hud-Son Forest Equipment, Inc staff and/or Dealer/Distributor staff.
- 6 - Any modification to the band mill that is performed by any personnel other than Hud-Son Forest Equipment, Inc direct staff voids the warranty.
- 7 - Any parts that are replaced without the discretion of the Dealer/Distributor voids the warranty on the part the customer is replacing and no reimbursement will be made.
- 8 - Parts purchased by the customer from an outside source, without prior approval from Hud-Son Forest Equipment, Inc will NOT be reimbursed.

**ALWAYS CALL YOUR SERVICING DEALER FIRST!!**

Dealers/Distributors carry parts and are very knowledgeable with the inner workings of your sawmill. Remember that modifying your mill or using parts that are Not Hud-Son Forest Equipment Inc approved, can void your warranty.

CE Approved Models: European Mills

Warranty on Parts ONLY!! No warranty on labor or shipping.

Warranty/Service Information:

Please contact our warranty department with any issues or to reorder parts, at 315-896-4316 or 800-765-7297. Hours of operation are M-F 8:00 - 4:30 est.

**IF NOT IN THE CONTINENTAL USA - HUD-SON DOES NOT PAY FREIGHT  
OR SHIPPING ON WARRANTY OR LABOR.**

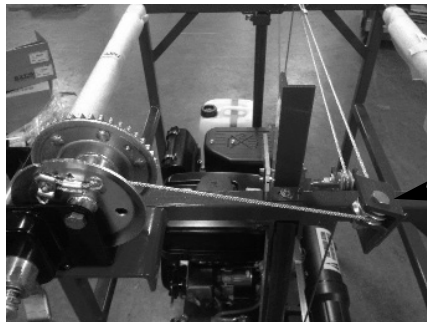
OSCAR 428/221 LIFT CABLE INSTALLATION INSTRUCTIONS

Your Hud-Son Saw Mill comes with a manual winch lift system. This system is spooled with a 5/32" steel cable that is used in combination with the winch to lift and lower the saw mill cutting head. The pictures below will help you in the event you need to re-install a cable.

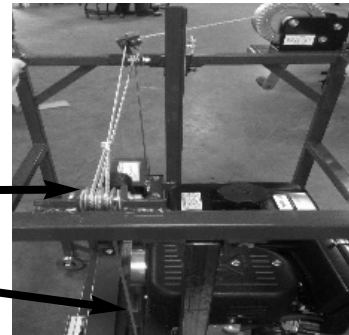
Material:

- All cable is 5/32" steel cable
- 130" of cable is installed on the winch and would around the lift bale at the time of delivery
- Two 86" sections of cable are spooled around the lift bale and then run through a pulley system on the mill head and back to an eye bolt located on the top side member of your saw mill

Fig. 1 winch cable routing



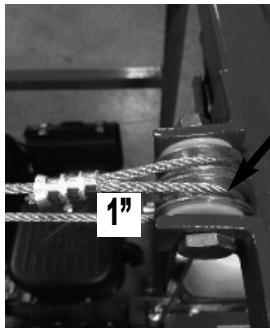
Lift cable is fastened to outside plate of winch and fed through plate and around spool in a clockwise direction (from operator side perspective) 1 1/2 times so that the cable comes off the top of the winch and around the first pulley located on the outside of the cage and then is routed across the width of mill.



Continue to run winch cable from first cable pulley across the mill and over cable pulley nearest the lift tube and down and around eyebolt mounted to mill cutting head.

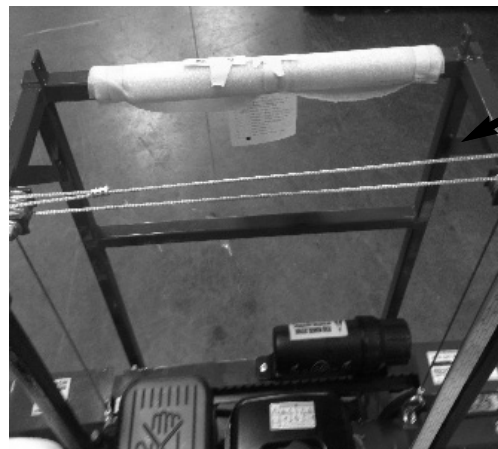
To eye bolt

Fig. 3 secondary lift cable routing



Attach secondary lift cable (68"/56") to winch cable. Make sure there is a spacing of 1" from cable pulley mounting bracket on discharge side of the mill and cable clamp. Proceed to route cable over the pulley and around.

Fig. 4 secondary lift cable routing

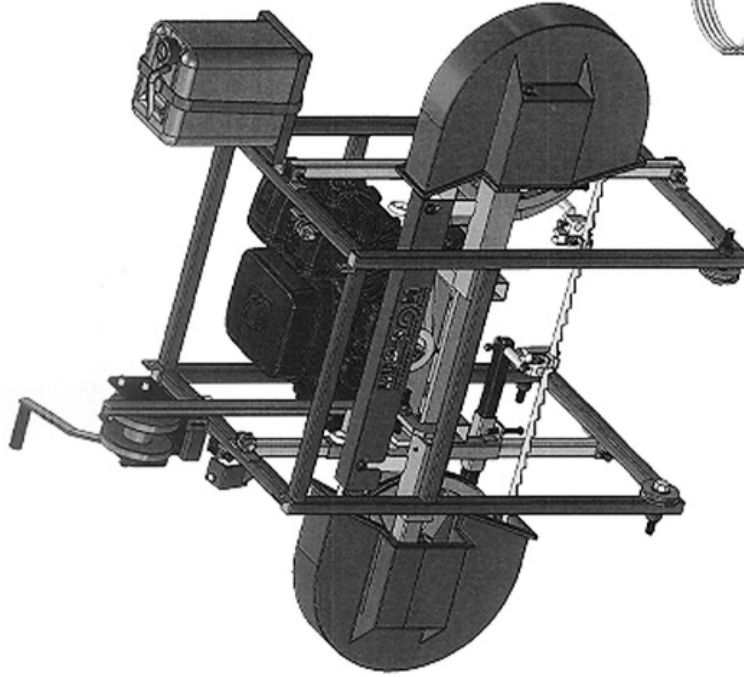


Continue to route secondary cable to un-used cable pulley on operator's side of mill. Route cable over this pulley and down through eye bolt on mill head.

## Trouble Shooting

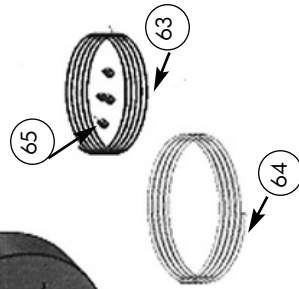
Problem	Cause	Solution
Blade is Diving/Rising	Dull Blade RPM's Not High Enough Blade Not Tensioned Properly Sawing Soft Pitch Wood (Pitch Build-Up in Blade Gullets) Guides Not Adjusted Properly	Sharpen or Replace Blade Saw at Full Throttle Check Torque on Tensioning Bolt (Perform "Flutter" Test) Use Lubricant on Blade <small>PETROLEUM PRODUCTS, MINERAL OIL/VEGETABLE OIL                      SHOULD NOT BE USED ON OUR MILLS</small> Adjust Guides Saw Tree from the Top to the Bottom (small end to wide end) Slow Down Reset Teeth to Proper Set
Mill Sawing Hard	RPM's Not High Enough on Engine Belt is Slipping Sawing Hardwood Dull Blade Bark or Sawdust Build-up on Wheels or Track Blade on Backwards	Always Saw at Full Throttle Adjust Belt Tension Slow Down your Sawing Speed Sharpen or Replace Blade Clean Wheels and Track Turn Blade Around
Clutch Slipping	Debris and/or Oil can cause slippage Pushing Too Hard	Clean out clutch bell Inspect/repair springs and shoes Push Lighter
Engine Powers Down (Loosing RPM's)	Pushing the Mill too Fast Dirty Air Filter Dull Blade	Slow Down your Sawing Speed Clean/Change Sharpen/Replace Blade
Mill not Sawing Square	Over Dogged Track Not Level & Square Cables are Out of Line Guides are Out of Adjustment Not Putting Flatside of Cant Flush with Squaring Post on the First Turn Bad Trolley Bearing	Loosen Dog Pressure Level Track Re-adjust Cables Re-Adjust Blade Guides Put Cant on Flatside, Flush with Squaring Post Replace Trolley Wheel
Log Moves When Dogged	Over Dogged, too Much Pressure on Dogs Under Dogged	Loosen Dog Pressure Tighten Dog Pressure
New Blade Will Not Cut	Blade Could Be Turned Inside Out	Turn the Blade So That the Teeth are Pointing to the Discharge Direction
Boards have Fine or Large Lines in them Every Several Inches in a Repeating Pattern	A Tooth in the Blade is Out of Set	Reset Tooth in Blade

# Oscar 221 Sawmill



NOTE:

- 5/32" GALVANIZED STEEL AIRCRAFT CABLE
- CABLE FROM WINCH TO MILL HEAD IS 94"
- SECONDARY LIFT CABLE IS 68"
- 1/4" LUBE LINE
- 3' FROM BUILT IN LUBE TANK TO LUBE BRACKET ON BLADE GUIDE
- 4' FROM 2.5 GALLON LUBE TANK TO BUILT IN LUBE TANK ON MILL HEAD





# Oscar 221 Mill Parts List

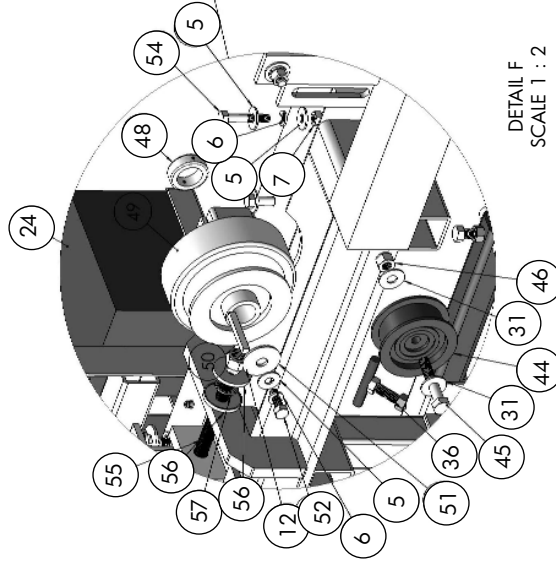
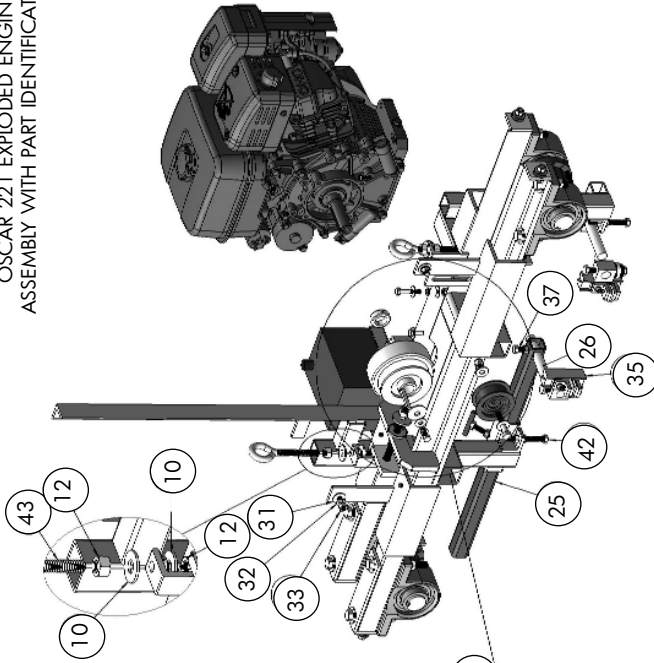
Oscar 221

Item No.	Part No.	Description	Qty
1	HAR-12-06-38	3/8-16 X 2 3/8 X 3/8 ZHSB	1
2	HAR-12-06-32	3/8-16 X 2 X 3/8 ZHSB	2
3	HAR-52-08-1250-062	Washer Nylon 1/2 X 1.25 X .062	7
4	WHE-01-08-24-445	CABLE PULLEY	4
5	HAR-50-05-875-063	5/16 Z FW	16
6	HAR-56-05-586-078	5/16 Z SW	8
7	HAR-25-05	5/16 ZHN	7
8	HAR-01-05-20	5/16-16 X 1 1/4 ZHB	3
9	BEA-01-24	1.5" PILLOW BLOCK BEARING	4
10	HAR-50-08-1250-063	1/2 Z FW	20
11	HAR-56-08-1250-063	1/2 ZSW	10
12	HAR-25-08	1/2 ZHN	13
13	HAR-02-08-70	1/2-18 X 4 1/2 X 1 1/2 ZHB	4
14	HAR-02-08-36	1/2-18 X 2 1/4 X 1 1/2 ZHB	4
15	FIT-04-03	ZERK FITTING	2
16	SHA-01-8.5	PILLOW BLOCK KEY SHAFT	2
17	KEY-01-06-32	3/8 X 3/8 X 2 KEYSTOCK	2
18	WHE-02-44-256	16" SHEAVE	2
19	BUS-01-24-256	Q BUSHING FOR SHEAVES	2
20	HAR-05-04-32	Q BUSHING BOLT	6
21	BEL-04-58-49	B-CROWN TOP CLEAR	1
22	TAN-03-001	OPERATORS MANUAL TUBE	1
23	MIL-03-2128-02	OSCAR 221/428 CENTER GUARD	1
24	BAT-02-230	230 CCA BATTERY	1
25	TUB-20-22	22" SLIDE TUBE ASSEMBLY	1
26	MIL-10-0000-001	GUIDE PIN	2
27	HAR-76-#8-16	1" #8 SELF DRILLING SCREW	3
28	KIT-001	SITE GLASS ASSEMBLY	1
29	TAN-01-2.5	2.5 GALLON LUBE TANK	1
30	FIT-03-04-04	LUBE TANK FITTING	1
31	HAR-50-06-1000-063	3/8 Z FW	11
32	HAR-56-06-680-094	3/8 Z SW	9
33	HAR-25-06	3/8 ZHN	12
34	ACC-01-01	TANK STRAP	1

35	BLG-02-01	SIMPLIFIED BLADE GUIDE LHS ASSEMBLY	1
36	MIL-10-0000-002	T HANDLE ASSEMBLY	1
37	HAR-01-06-16	3/8-18 X 1 ZHB	6
38	MIL-03-2128-01P	PLASTIC BLADE GUARD 21/28	2
39	CAP-01-01	1" SQUARE CAP PLUG	2
40	BLA-01-132-20	132" BAND BLADE	1
41	HAR-52-06-1000-063	3/8 N FW	4
42	HAR-01-06-48	3/8-18 X 3 Z HB	2
43	HAR-09-06-64	1/2-18 X 4 Z EYEBOLT	2
44	WHE-03-06-048	3" FLAT BELT IDLER W/BUSHING	1
45	HAR-11-M10-60	M10 X 1.5 X 60 ZHB	1
46	HAR-36-M10	M10-24 ZHB	1
47	ENG-02-09	9HP SUBARU	1
48	COL-01-16-25	1" SHAFT COLLAR	1
49	CLU-02-16	CLUTCH	1
50	KEY-01-04-32	1/4 X 1/4 X 2 KEY STOCK	1
51	HAR-53-06-1500-125	3/8 X 1 1/2 Z SER. WASHER	1
52	HAR-01-05-16	5/16-18 X 1 ZHB	1
53	BEL-02-58-80	B80 V-BELT	1
54	HAR-02-05-28	5/16-18 X 1 3/4 X 7/8 ZHB	4
55	HAR-01-08-66	1/2 - 13 X 4.5"	1
56	HAR-08-1500-160	1/2 PCW	2
57	BUS-06-08-15	THRUST BEARING	1
58	WHE-04-12-53	TW3 TRACK WHEEL	4
59	HAR-55-12-1000-125	3/4 X 1 X 1/8 ZNFW	8
60	HAR-12-12-64	TRACK WHEEL SHOULDER	4
61	WIN-01-2000	Brake Winch 1500	1
62	TUB-20-38	LIFT TUBE	2
63	CAB-01-0532	Cable, 5/32	1
64	HOS-02-04	LUBE HOSE	1
65	CLA-04-02	Wire Rope Clamp 1/8"	4
66	OSC-36221	OSCAR 221 HEAD WELDMENT	1
67	BLG-02-01	Simplified Blade Guide RHS Assy	1
68	OSC-32221	OSCAR 221 HEAD ASSEMBLY	1

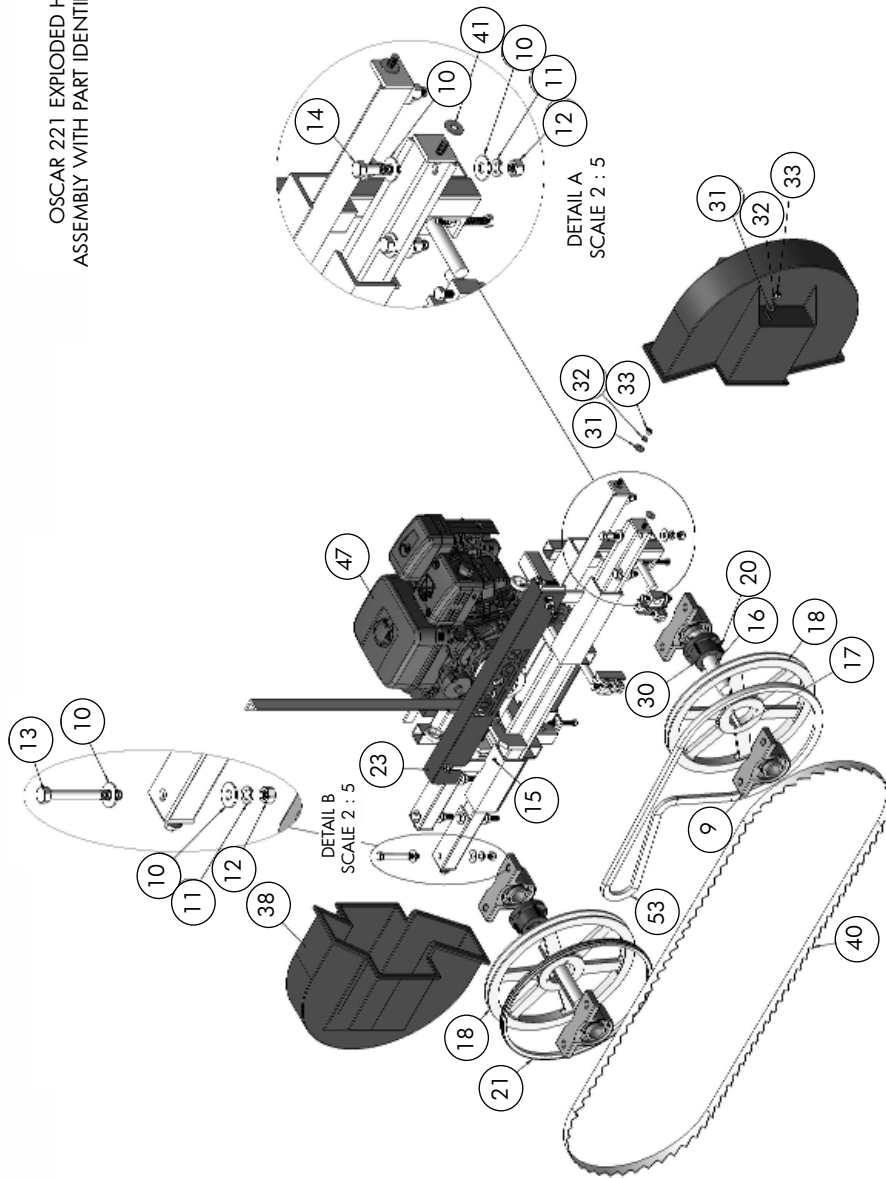
OSCAR 221 EXPLODED ENGINE  
ASSEMBLY WITH PART IDENTIFICATION

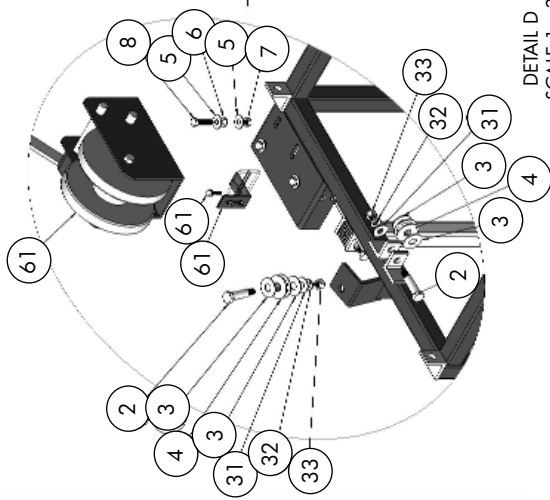
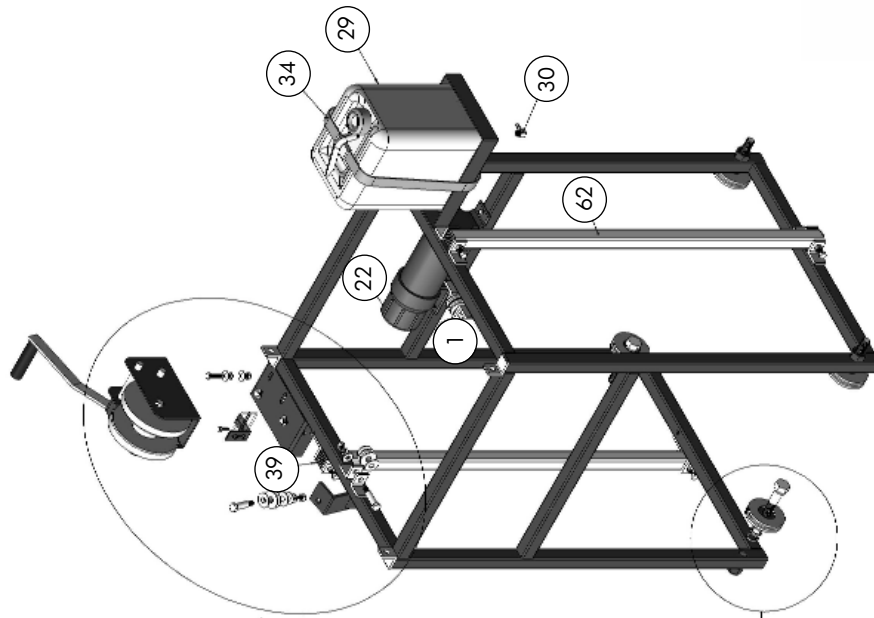
DETAIL G  
SCALE 1 : 2



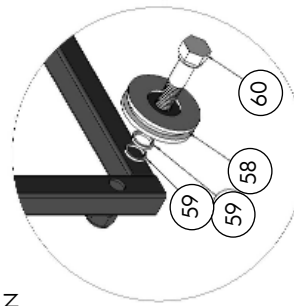
DETAIL F  
SCALE 1 : 2

OSCAR 221 EXPLODED HEAD  
ASSEMBLY WITH PART IDENTIFICATION

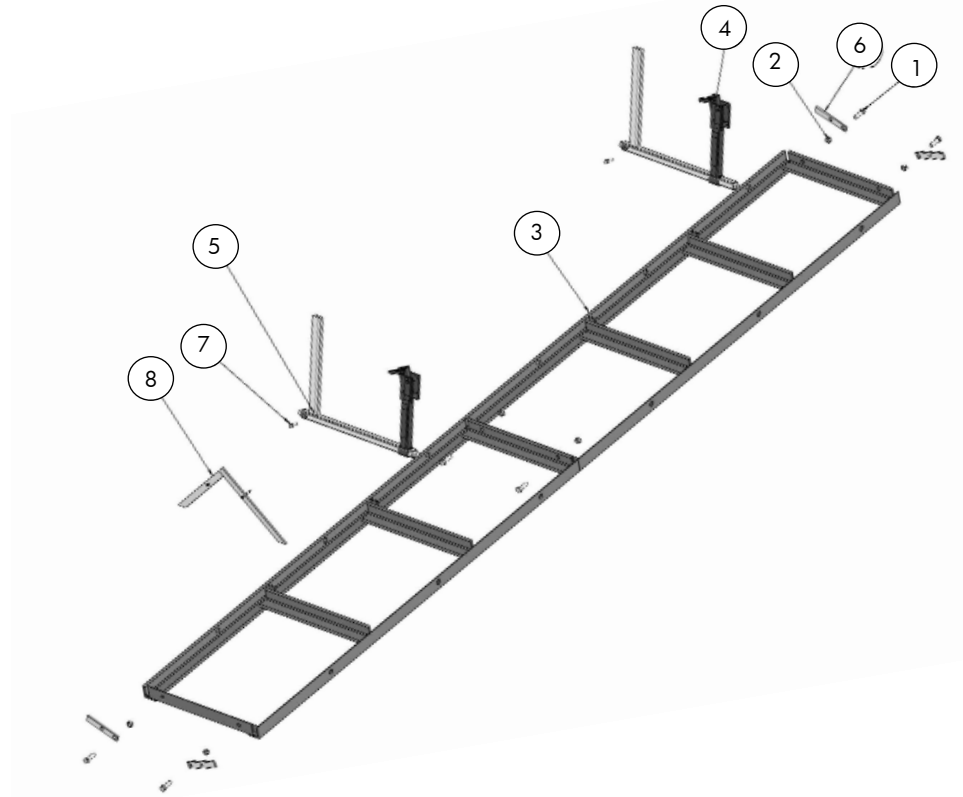




OSCAR 221 EXPLODED CAGE  
ASSEMBLY WITH PART IDENTIFICATION



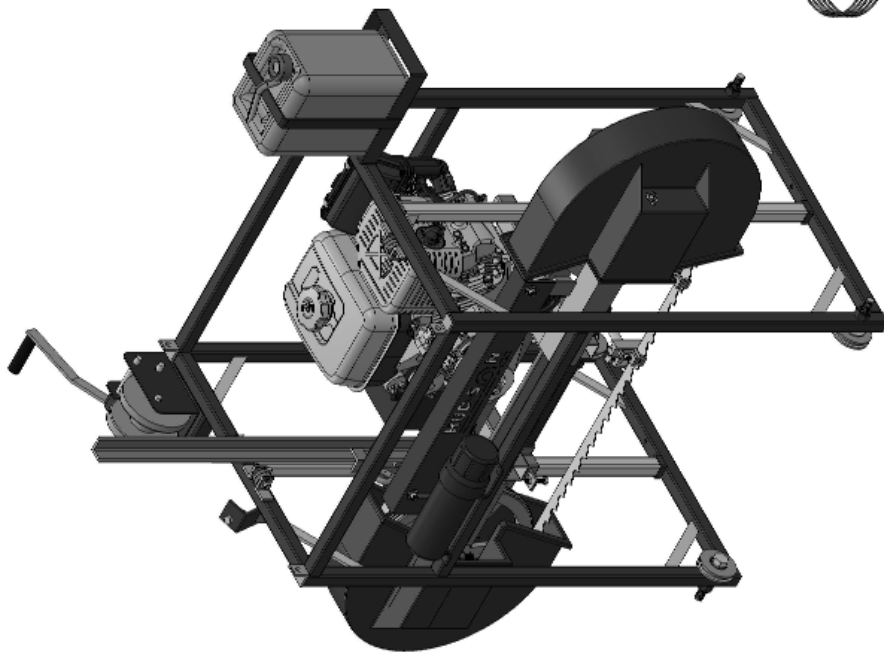
## Track Assembly Oscar 221



## Track Parts List Oscar 221

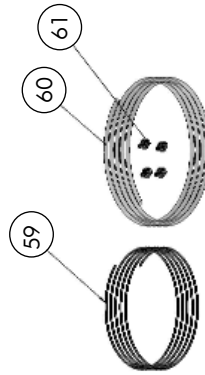
Item No.	Part Number	Description	Qty.
1	HAR-01-08-24	1/2 - 13 X 1 1/2 ZHB	6
2	HAR-25-08	1/2"-13 ZHN	6
3	MIL-15-01-221	OSCAR 21 TRACK WELDMENT	2
4	MIL-15-02S	SMALL LOG DOG	2
5	MIL-15-05	OSCAR 18 J-BAR WELDMENT	2
6	MIL-15-03	TRACK STOPS	4
7	HAR-01-06-16	HCS 3/8 - 16 X 1 Z5	2
8	MIL-15-06-221	221 CHEATER	1

# Oscar 428 Sawmill



NOTE:

- 5/32" GALVANIZED STEEL AIRCRAFT CABLE
- 94" OF CABLE ON WINCH SPOOL
- 64" SECONDARY LIFT CABLE
- 1/4" LUBE LINE
- 3' FROM BUILT IN LUBE TANK TO LUBE BRACKET ON BLADE GUIDE
- 4' FROM 2.5 GALLON LUBE TANK TO BUILT IN LUBE TANK ON MILL HEAD



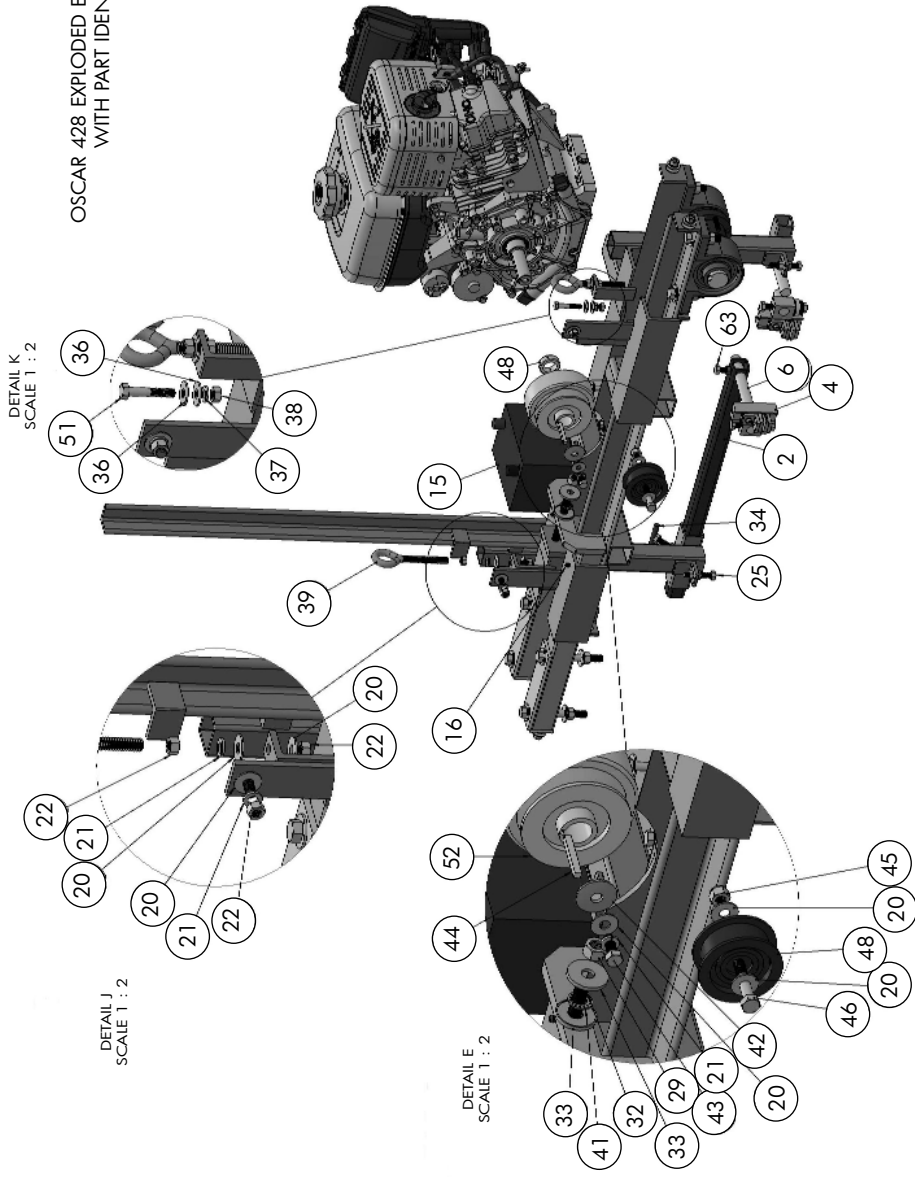
## Oscar 428 Mill Parts List

Item No.	Part No.	Description	Qty
1	WIN-01-2000	Brake Winch 1500	17
2	TUB-20-22	22" SLIDE TUBE ASSEMBLY	17
3	BEA-01-24	1.5" PILLOW BLOCK BEARING	42
4	BLG-02-01	SIMPLIFIED BLADE GUIDE LHS	11
5	SHA-01-8.5	PILLOW BLOCK KEY SHAFT	21
6	MIL-10-0000-001	GUIDE PIN	21
7	WHE-02-44-256	16" SHEAVE	2
8	HAR-05-04-32	Q BUSHING BOLT	6
9	BUS-01-24-256	Q BUSHING FOR SHEAVES	2
10	BEL-04-58-49	B-CROWN TOP CLEAR	1
11	MIL-03-2128-01	18/228 GUARD ASSEMBLY	2
12	MIL-03-2128-02	OSCAR 221/428 CENTER GUARD	1
13	KIT-001	SITE GLASS ASSEMBLY	1
14	ACC-01-01	LASHING STRAP	2
15	KEY-01-06-32	3/8 X 3/8 X 2 KEYSTOCK	2
16	BAT-02-230	230 CCA BATTERY	1
17	HAR-12-06-38	3/8-16 X 2 3/8 X 3/8 ZHSB	1
18	HAR-12-06-32	3/8-16 X 2 X 3/8 ZHSB	2
19	HAR-52-08-1250-062	Washer Nylon 1/2 X 1.25 X .062	6
20	HAR-50-06-1000-063	3/8 Z FW	16
21	HAR-56-06-680-094	3/8 Z SW	12
22	HAR-25-06	3/8 ZHN	19
23	WHE-01-08-24-445	CABLE PULLEY	4
24	HAR-50-08-1250-063	1/2 Z FW	17
25	HAR-01-06-32	3/8-18 X 2 ZHB	-
26	FIT-04-03	ZERK FITTING	2
27	HAR-52-06-1000-063	3/8 N FW	4
28	HAR-56-08-1250-063	1/2 ZSW	8
29	HAR-25-08	1/2 ZHN	9
30	HAR-01-08-36	1/2-13 x 2 1/4 ZHB	4
31	HAR-02-08-70	1/2-18 X 4 1/2 X 1 1/2 ZHB	4
32	HAR-01-08-66	1/2 - 13 X 4.5"	1
33	HAR-08-1500-160	1/2 PCW	2
34	MIL-10-0000-002	T HANDLE ASSEMBLY	1
35	HAR-02-05-16	Hex bolt 5/16-18 x 1" x 7/8"t Z	3

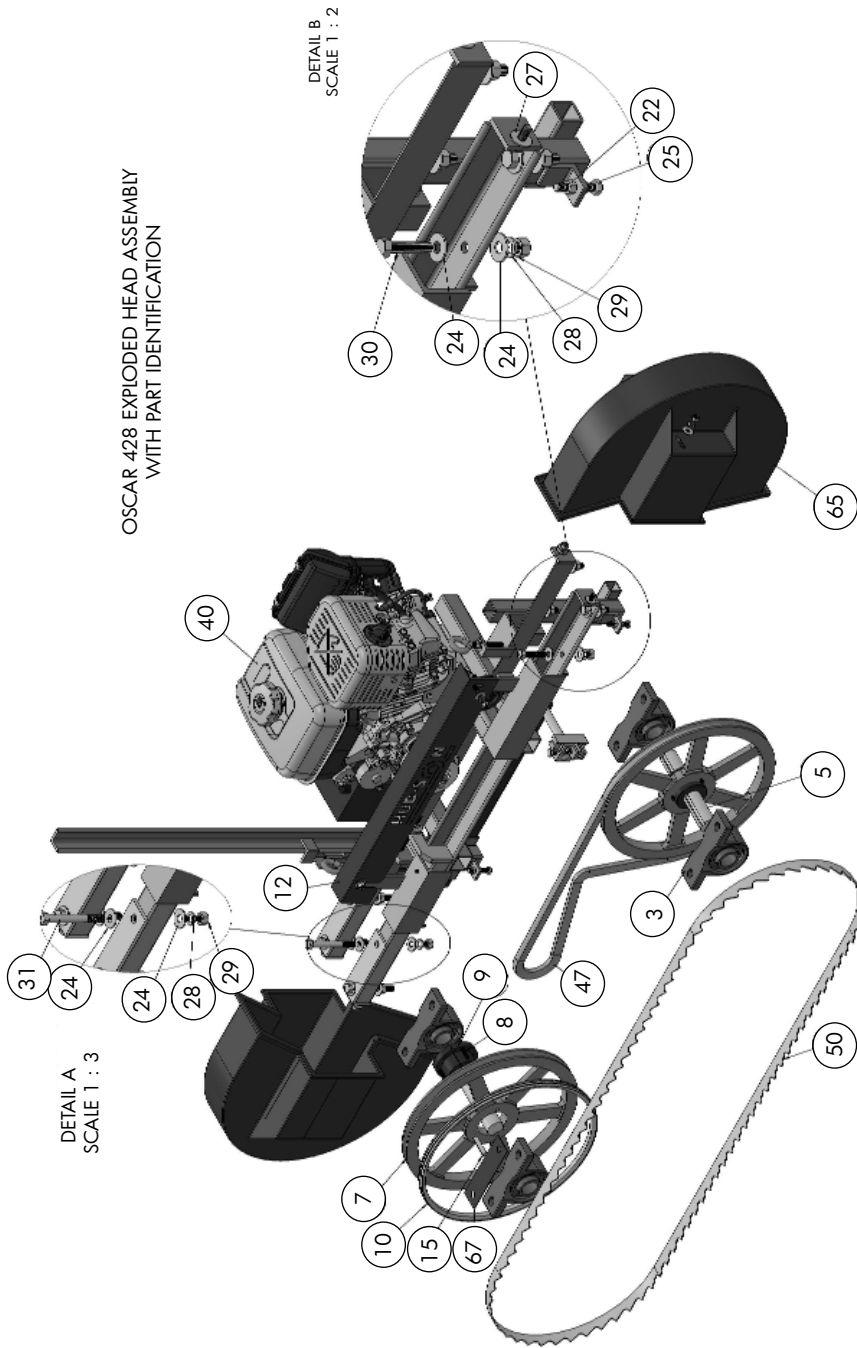


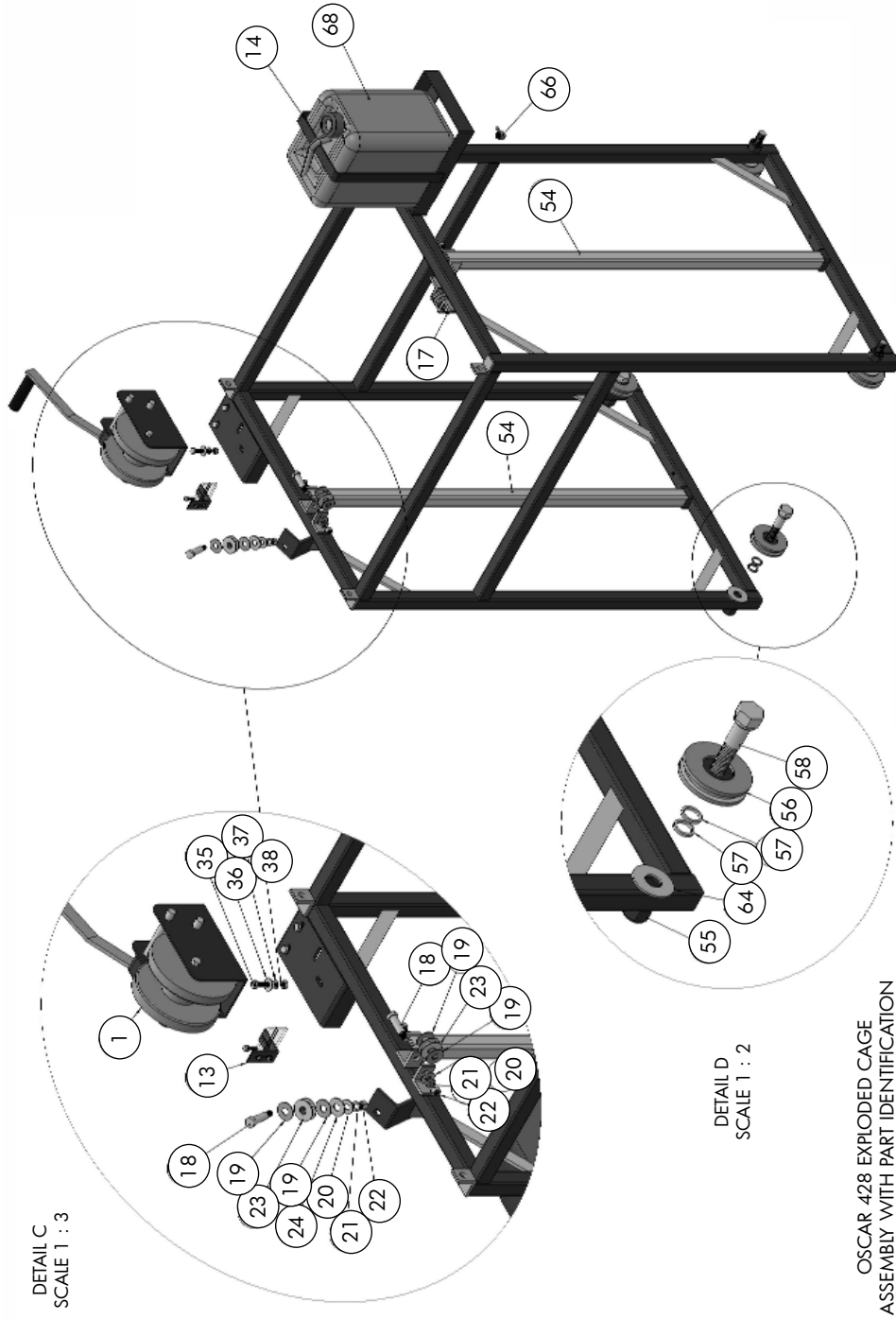
36	HAR-50-05-875-063	5/16 Z FW	11
37	HAR-56-05-586-078	5/16 Z SW	7
38	HAR-25-05	5/16 ZHN	7
39	HAR-09-06-64	1/2-18 X 4 Z EYEBOLT	2
40	ENG-02-14	SUBARU 14HP ENGINE	1
41	BUS-06-08-15	THRUST BEARING	1
42	HAR-53-06-1500-125	3/8 X 1 1/2 Z SER. WASHER	1
43	HAR-03-06-16	3/8-24 X 1 ZHB	1
44	KEY-01-04-32	1/4 X 1/4 X 2 KEY STOCK	1
45	HAR-36-M10	M10-24 ZHB	1
46	HAR-11-M10-60	M10 X 1.5 X 60 ZHB	1
47	BEL-02-58-80	B80 V-BELT	1
48	WHE-03-06-048	3" FLAT BELT IDLER W/BUSHING	1
49	COL-01-16-25	1" SHAFT COLLAR	1
50	BLA-01-132-20	132" BAND BLADE	1
51	HAR-02-05-28	5/16-18 X 1 3/4 X 7/8 ZHB	4
52	CLU-02-16	CLUTCH	1
53	TAN-03-001	OPERATORS MANUAL TUBE	1
54	TUB-20-41	LIFT TUBE	2
55	MIL-02-2128	OSCAR 428 CAGE WELDMENT	1
56	WHE-04-12-53	TW3 TRACK WHEEL	4
57	HAR-55-12-1000-125	3/4 X 1 X 1/8 ZNFW	8
58	HAR-12-12-64	TRACK WHEEL SHOULDER BOLT	4
59	CAB-01-0532	Cable, 5/32	1
60	HOS-02-04	LUBE HOSE	1
61	CLA-04-02	Wire Rope Clamp 1/8"	4
63	HAR-01-06-16	3/8-18 X 1 ZHB	4
64	HAR-50-12-2000-063	3/4 ZFW	4
65	MIL-03-2128-01P	PLASTIC BLADE GUARD 21/28	2
66	FIT-03-04-04	LUBE TANK FITTING	1
67	MIL-10-010	PILLOW BLOCK SHIM	1
68	TAN-01-2.5	2.5 GALLON LUBE TANK	1
69	BLG-02-01	Simplified Blade Guide RHS Assy	1
70	HAR-01-06-32	3/8-18 X 2 ZHB	4
71	HAR-76-#8-16	1" #8 SELF DRILLING SCREW	3

OSCAR 428 EXPLODED ENGINE AREA VIEW  
WITH PART IDENTIFICATION



OSCAR 428 EXPLODED HEAD ASSEMBLY  
WITH PART IDENTIFICATION



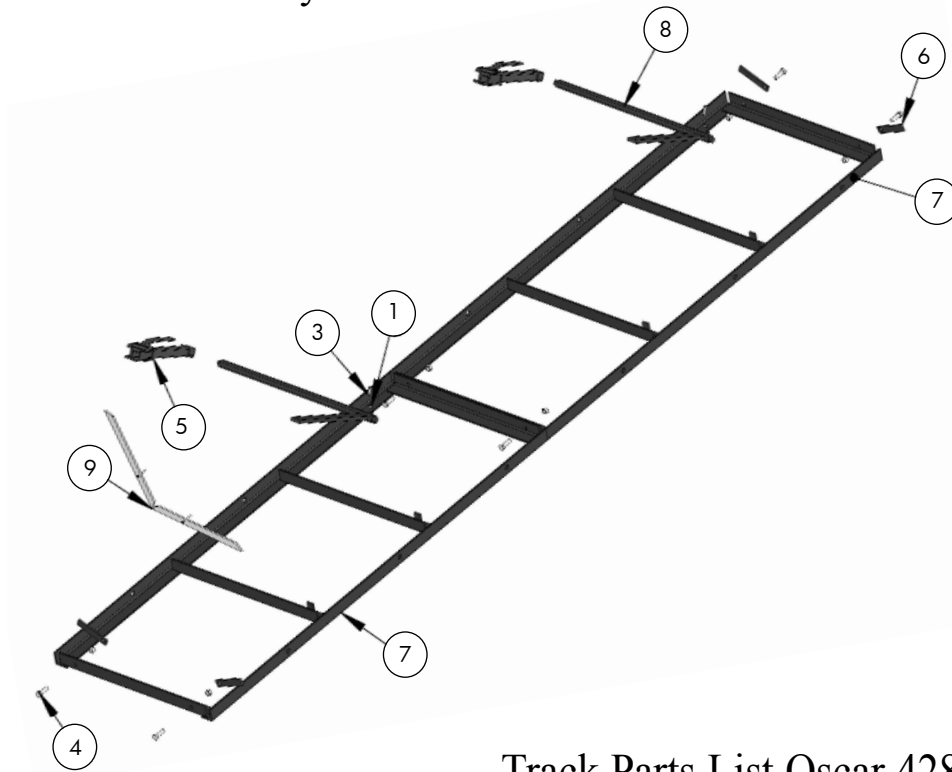


DETAIL C  
SCALE 1 : 3

DETAIL D  
SCALE 1 : 2

OSCAR 428 EXPLODED CAGE  
ASSEMBLY WITH PART IDENTIFICATION

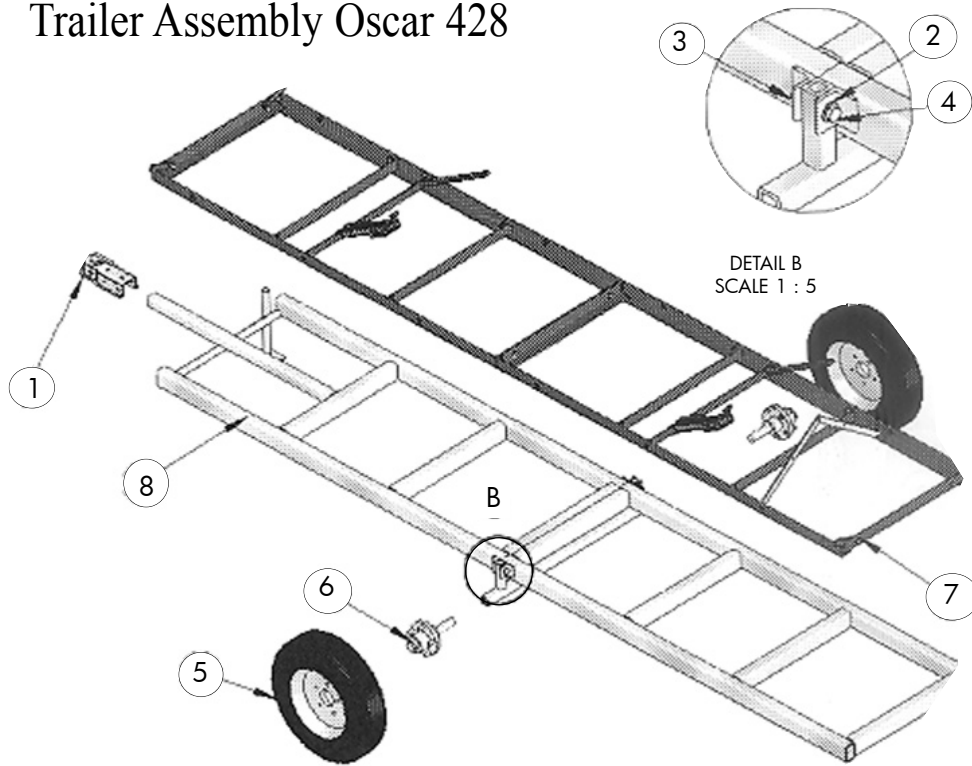
## Track Assembly Oscar 428



## Track Parts List Oscar 428

Item No.	Part No.	Description	Qty.
1	HAR-25-04	1/4"-20 ZHN	2
2	HAR-25-08	1/2"-13 ZHN	6
3	HAR-01-04-16	1/4 - 20 X 1 ZHB	2
4	HAR-01-08-24	1/2 - 13 X 1 1/2 ZHB	6
5	MIL-15-02S	SMALL LOG DOG	2
6	MIL-15-03	TRACK STOP BRACKET	4
7	MIL-15-01-428	428 TRACK WELDMENT	2
8	MIL-15-05	J-BAR	2
9	O228-003-00-3	LOG SUPPORT	1

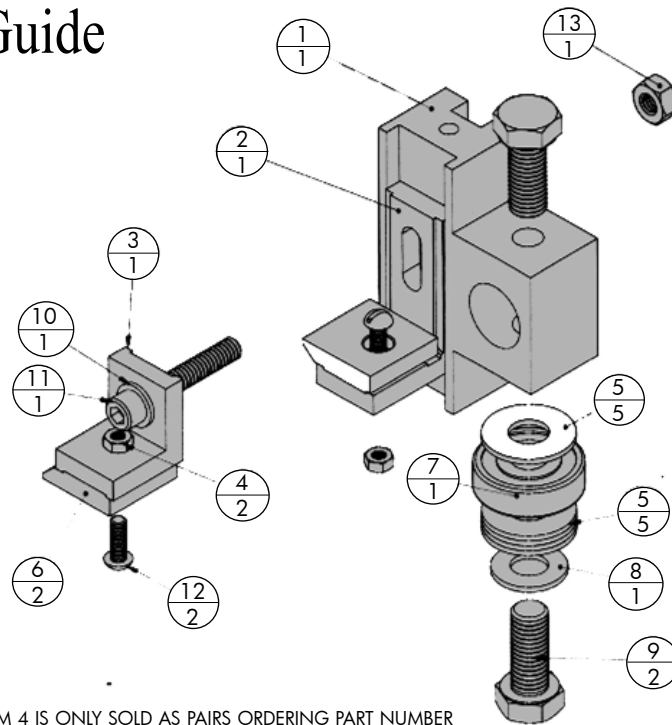
## Trailer Assembly Oscar 428



## Trailer Parts List Oscar 428

Item No.	Part No.	Description	Qty
1	TRA-01-002	COUPLER	1
2	HAR-50-08-1076-10	1/2 ZFW	2
3	HAR-25-08	1/2"-16 ZHN	2
4	HAR-01-08-40	1/2"-16 X 2 1/2" ZHB	2
5	TIR-01-175-80-13	TRAILER TIRE	2
6	AXL-01-05-14	4 1/2" HUB	2
7	O228-003 A	TRACK ASSEMBLY	1
8	O228-004-00-1	TRAILER FRAME WELDMENT	1

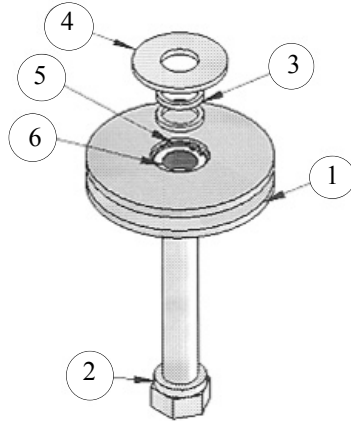
# Blade Guide



NOTE: ITEM 4 IS ONLY SOLD AS PAIRS ORDERING PART NUMBER  
CP20-10A INCLUDES TWO SHOES, TWO NUTS  
(ITEM 13, AND TWO SCREWS (ITEM 12)

Item No	Part No	Description	Qty.
1	BLG-01-06	S Guide Body	1
2	BLG-01-05	Long Shoe Holder	1
3	BLG-01-04	Short Shoe Holder	1
4	HAR-33-M4	M4 x .7 Metric Hex Nut	2
5	HAR-50-06-1000-82	3/8 flat washer USS larger, zink finish	5
6	BLG-01-01	Guide Shoe (sold as pairs)	2
7	BEA-03-06-16	6200-2RS Bearing	1
8	HAR-50-06-822-68	3/8" flat washer, SAE small	1
9	HAR-03-M10-24	Hex cap screw, M10 x 1.5 x 25 -- 25S	2
10	HAR-50-05-500-046	Flat Washer Selected Narrow 0.25	1
11	HAR-03-08-24	SHCS 0.25-20x1.5x1.5-S	1
12	HAR-79-#8-08	Slotted RDHD Screw #8-32x 1/2"	2
13	HAR-25-04	1/4" Course Thread Zinc Finish Hex Nut	1

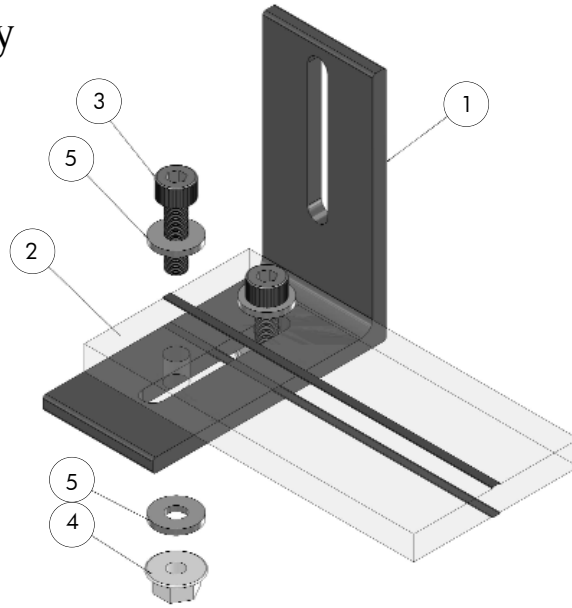
## Track Wheel Assembly Parts List



Item No.	Part No.	Description	Qty.
1	WHE-04-12-53	TRACK WHEEL	1
2	HAR-12-12-64	SHOULDER BOLT	1
3	HAR-55-12-1000-125	3/4"X1"X1/8" ZNFW	2
4	HAR-50-12-1166-76	3/4" ZFW	1
5	PIN-08-25	C-CLIP	1
6	BEA-03-12-24T	3/4" BEARING	1



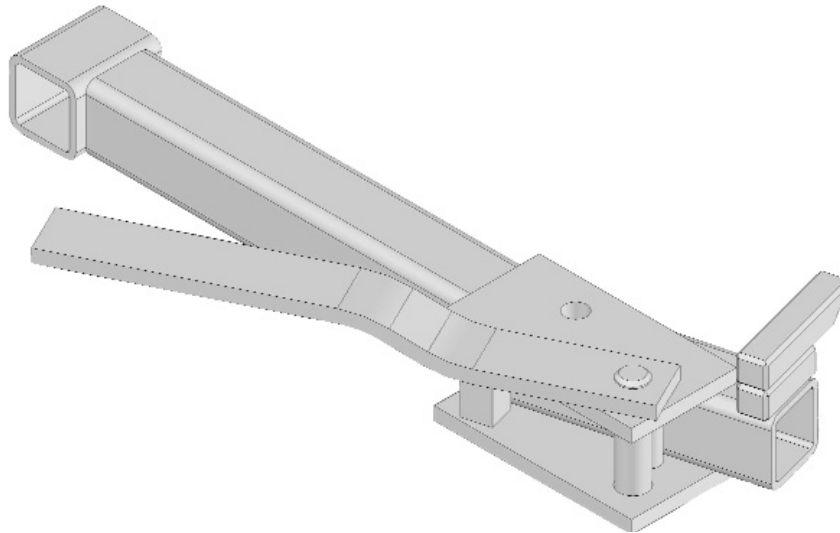
# Site Glass Assembly Parts List



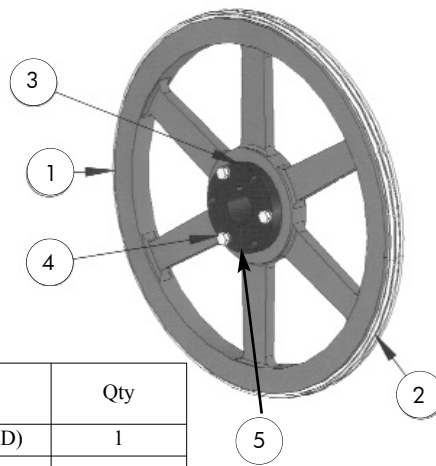
Item No.	Part No.	Description	Qty.
1	KIT-001	SIGHT GLASS BAR	1
2	KIT-001	SIGHT GLASS BAR	1
3	HAR-15-M10	10MM-1.5X25 8.8 Z	2
4	HAR-36-M10	M10-1.5 FLANGE NUT	2
5	KIT-001	O30/36 SIGHT GLASS BRACKET	1
6	HAR-51-03-438-047	#6 P FW	4

## Small Dog

MIL-15-02S

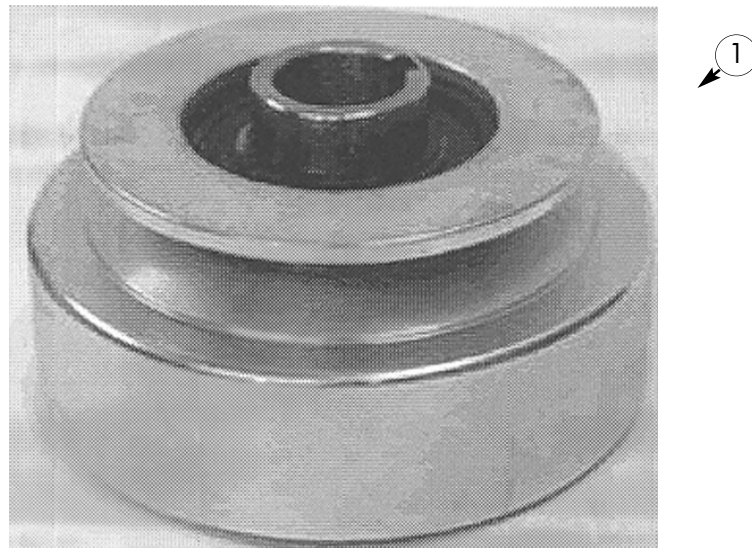


## Sheave Assembly Parts List w/Belting for Oscar 221 & 428



Item No	Part No	Description	Qty
1	WHE-02-44-288	18" SHEAVE (RED)	1
2	BEL-04-58-056.5	Belting Crown Top	1
3	BUS-01-24-256	Q-BUSHING	1
4	HAR-01-05-32	Bolt	3

## Clutch Breakdown Parts List for Oscar 221 & 428



Item No	Part No	Description	Qty
1	CLU-02-16	CLUTCH	1

# MAINTENANCE NOTES

---

---

---

---

---

---

---

---

---

---

---

---

---

---

---

---

---

---

---

---

---

---

---

---

*Thank you for choosing*



Hud-Son Forest Equipment, Inc.  
8201 State Rt. 12, PO Box 345 Barneveld, NY 13304  
info@hud-son.com

We have an onsite technician available to answer any questions  
Monday - Friday 8 to 4:30 and Saturday from 8 to noon. 315-896-7297.

**WWW.HUD-SON.COM • 800.765.SAWS**